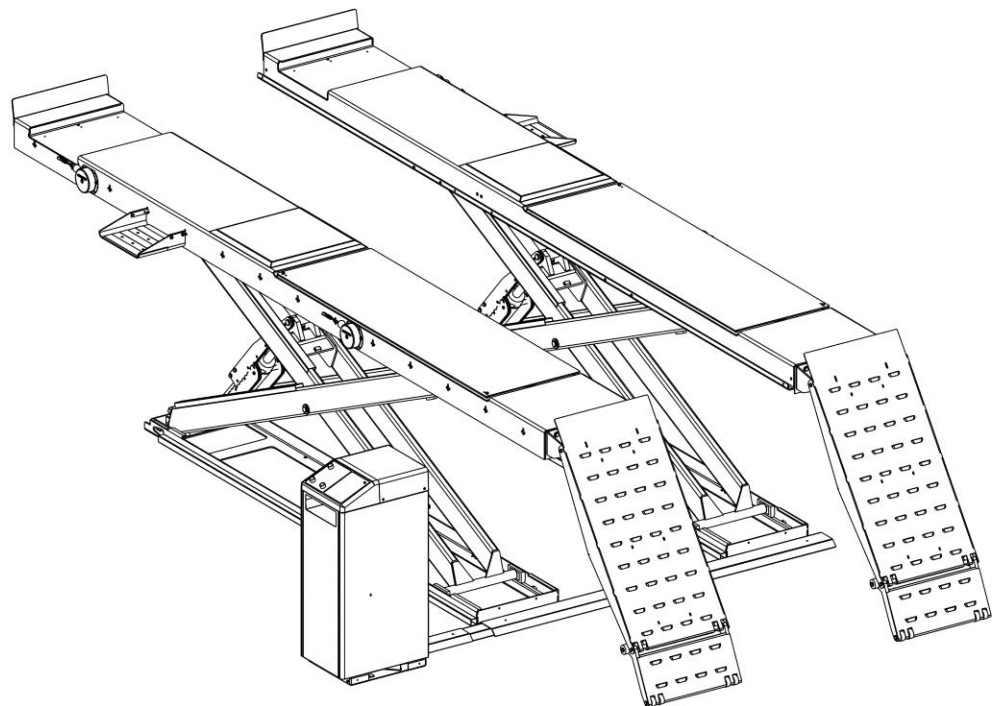
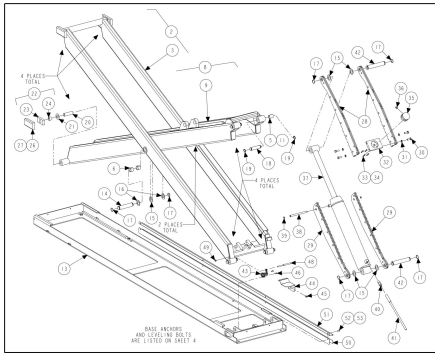


**RX45LIS**

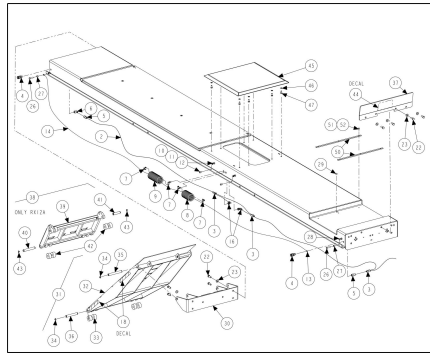


**RX54IS**

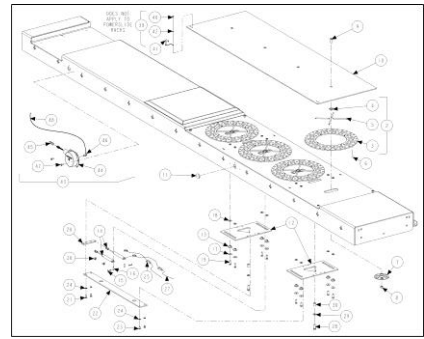
## RX45, RX45L AND RX54 SERIES LIFT RACKS



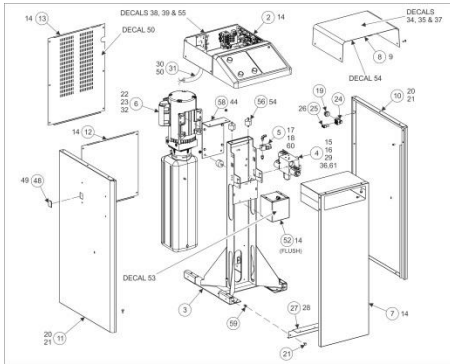
**SHEET 3**



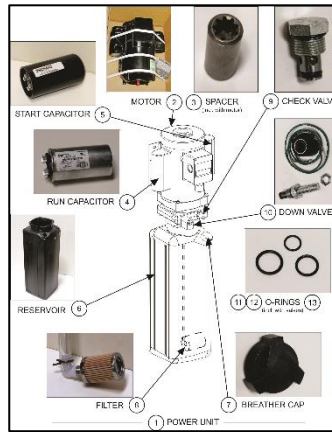
**SHEET 4**



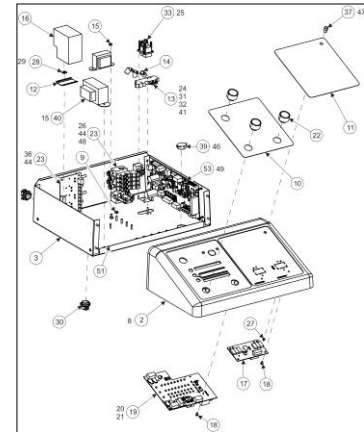
**SHEET 5**



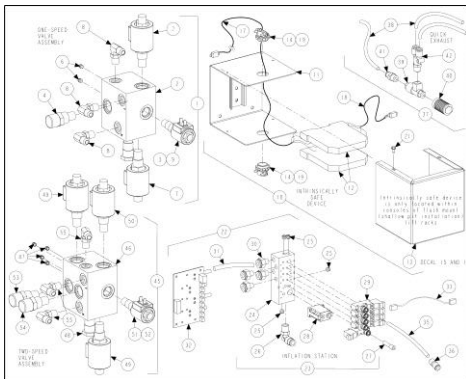
**SHEET 6**



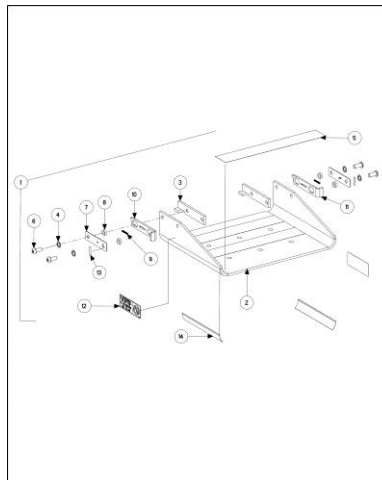
**SHEET 7**



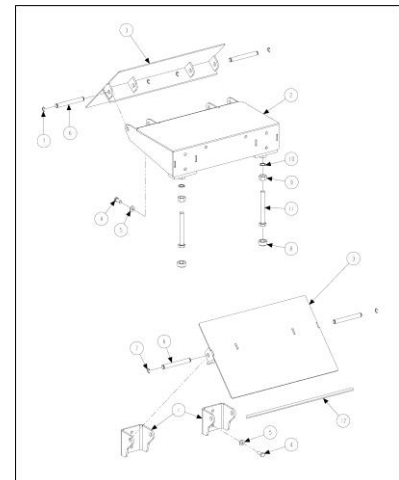
**SHEET 8**



**SHEET 9**



**SHEET 10**



**SHEET 11**

## RX45, RX45L AND RX54 SERIES LIFT RACKS

REFER TO NEXT SHEET FOR PARTS DESCRIPTION LISTING

PARTS DESCRIPTION LISTING

Sheet	Description
3	LEGS AND BASE
4	<u>RUNWAY AIR, WHEEL STOP AND RAMP</u>
5	SLIP PLATE AND POWERSLIDE
6	RX CONSOLE * (Sheet 6 is repeated to allow the large parts list to be split into two tables.)
7	POWER UNIT REPLACEMENT COMPONENTS
8	UPPER RX CONSOLE *
9	RX CONSOLE COMPONENTS *
10	WORKSTEP
11	FLUSH-MOUNT RAMPS

**RUNWAY ASSEMBLIES (See Sheets 4 and 5)**

	Part Number	Description	LIFTS
1	170-1265-1-PPP	LEFT RUNWAY ASSEMBLY RX10	RX45 and RX45F
2	170-1264-1-PPP	RIGHT RUNWAY ASSEMBLY RX10	RX45 and RX45F
3	170-1285-1-PPP	LEFT RUNWAY RX10 PS 2-SPEED	RX45IS and RX45FIS
4	170-1284-1-PPP	RIGHT RUNWAY RX10 PS 2-SPEED	RX45IS and RX45FIS
5	170-1263-1-PPP	LEFT RUNWAY ASSEMBLY RX-10L	RX45L and RX45LF
6	170-1262-1-PPP	RIGHT RUNWAY ASSEMBLY RX-10L	RX45L and RX45LF
7	170-1283-1-PPP	LEFT RUNWAY RX10L PS 2-SPEED	RX45LIS and RX45LFIS
8	170-1282-1-PPP	RIGHT RUNWAY RX10L PS 2-SPEED	RX45LIS and RX45LFIS
9	170-1281-1-PPP	LEFT RUNWAY ASSEMBLY RX12A	RX54 and RX54F
10	170-1280-1-PPP	RIGHT RUNWAY ASSEMBLY RX12A	RX54 and RX54F
11	170-1279-1-PPP	LEFT RUNWAY ASSEMBLY RX12A PS	RX54IS and RX54FIS
12	170-1278-1-PPP	RIGHT RUNWAY ASSEMBLY RX12A PS	RX54IS and RX54FIS

**CONSOLES (See Sheets 6, 7, 8 and 9)**

	-216E: 208/230 Volt 1 Phase – 60 HZ	-215E: 208/230 Volt 1 Phase – 50 HZ	-435E: 208/230/40/460 V 3 Phase – 50 HZ	LIFTS
1	30-509-1-PS	30-510-1-PS	30-508-1-PS	RX45, RX45L and RX54
2	30-515-1-ISF	30-465-1-IS	30-516-1-ISF	RX45IS, RX45LIS and RX54IS
3	30-509-1-PS	30-465-1-IS	30-508-1-PS	RX45F, RX45LF and RX54F
4	30-467-1-IS	30-465-1-IS	30-516-1-ISF	RX45FIS, RX45LFIS and RX54FIS

\* IMPORTANT NOTE WHEN ORDERING REPLACEMENT POWER UNIT AND MANIFOLD PARTS: It is important to verify the existing equipment. Each power unit is clearly marked with its model number on the name plate and each manifold have the part number on top.

**THRESHOLD COMPONENTS (Not Illustrated)**

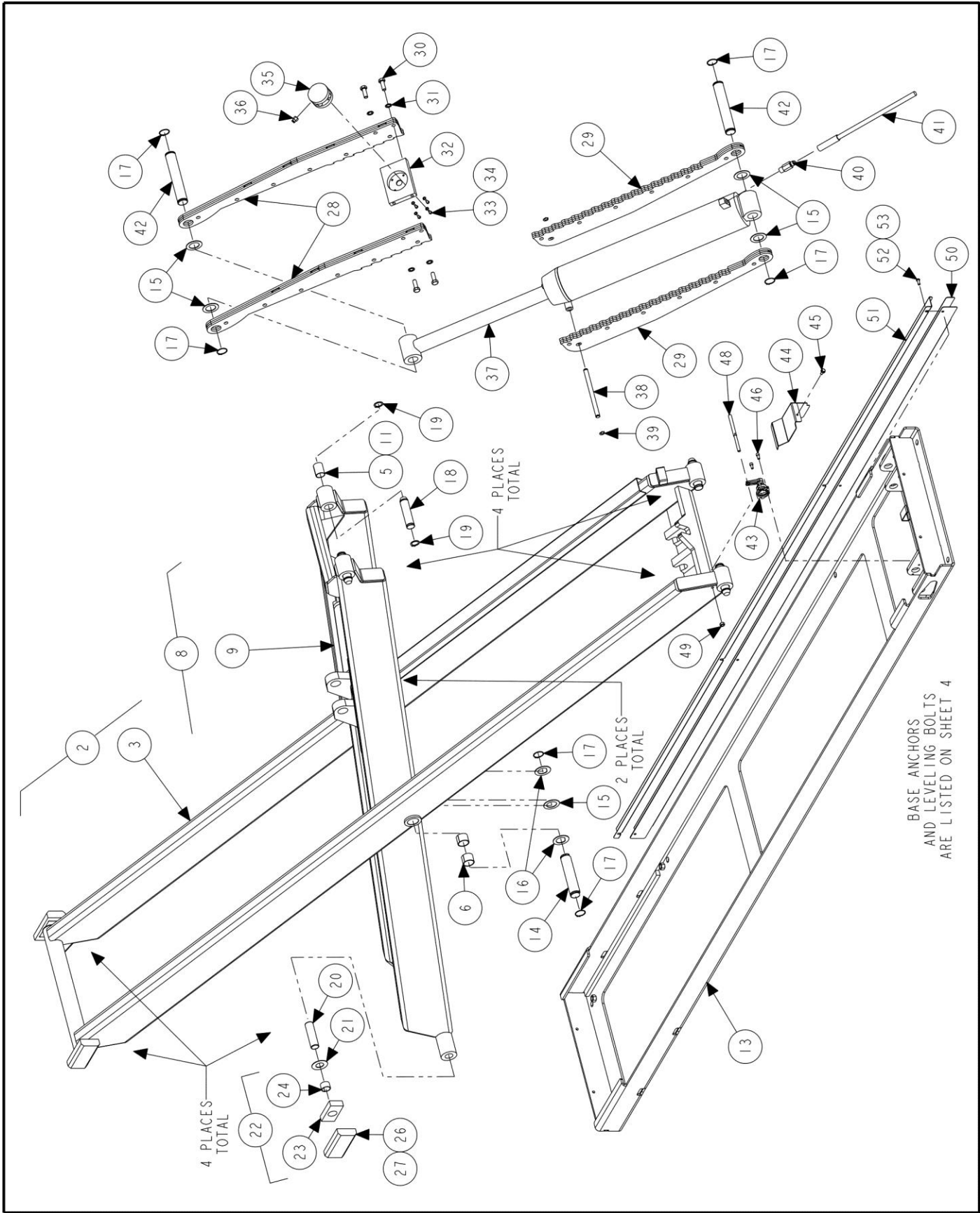
	Part Number	Description	Qty.
1	69-1377-005	COVER, HYDRAULIC HOSE TOP - WIDE	1
2	69-1378-005	COVER, HYDRAULIC LINES BOTTOM -WIDE	1
3	69-1386-005	COVER, HYDRAULIC HOSE CENTER RX	1
4	74-423-2	BOLT, ANCHOR 1/4 X 2 1/4 INCH HAMMER (Threshold Anchors)	10

**Hydraulic Hoses (Quick Reference)**

1	137-115-2	HOSE, 3/8 INCH RX RACK (sheet 3, item 41) (manifold to cylinder)	2
2	137-98-2	HOSE, 3/8 INCH RM RACK( Ref sheet 6 , item 29) (pump to manifold)	1

Additional parts information is available on hunter web site (search spare parts)





BASE ANCHORS  
AND LEVELING BOLTS  
ARE LISTED ON SHEET 4

### LEGS AND BASE

REFER TO NEXT SHEET FOR PARTS DESCRIPTION LISTING

## PARTS DESCRIPTION LISTING

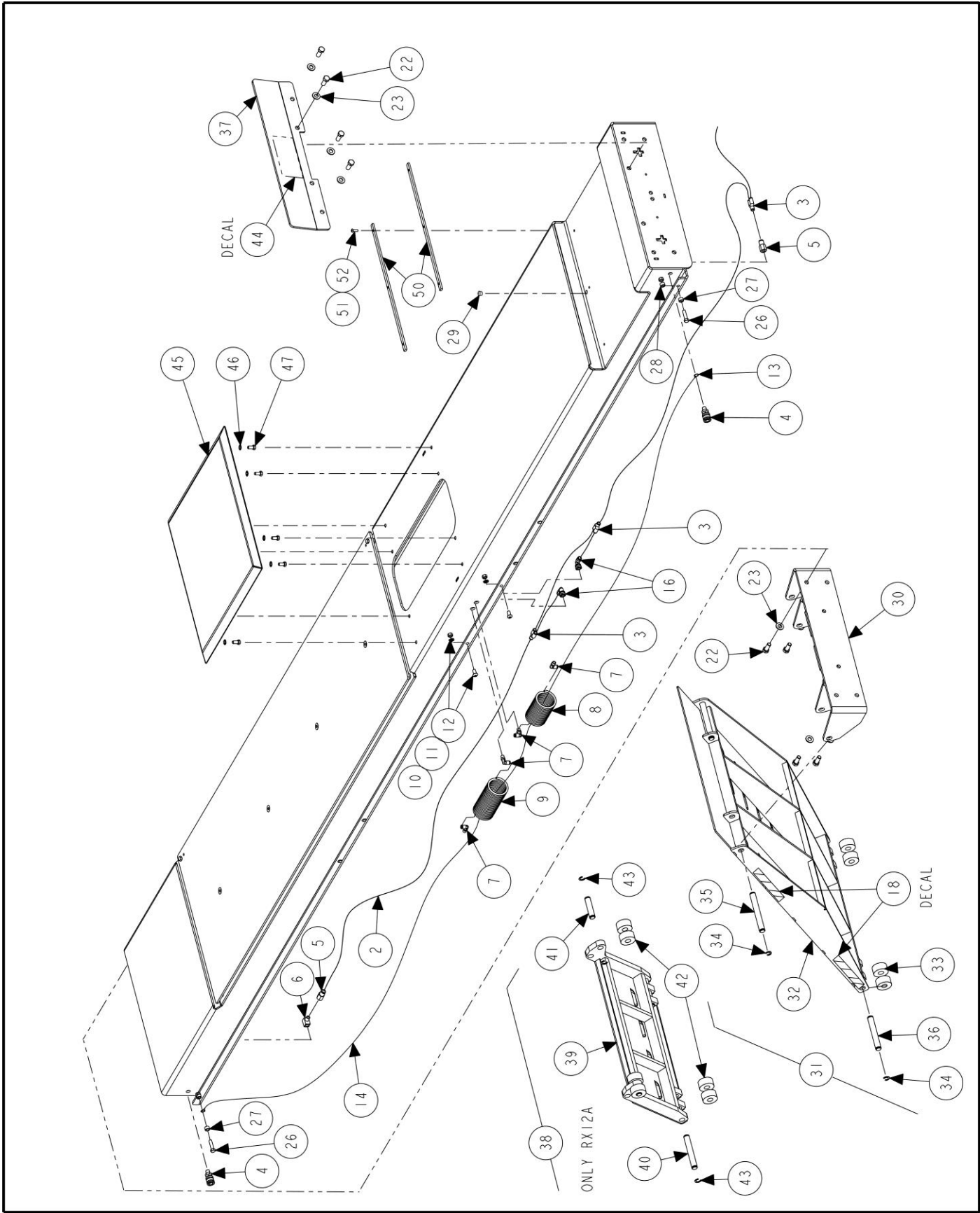
Index No.	Part Number	Description	Qty.
1	SEE SHEET 2 FOR PART #	RUNWAY ASSEMBLY (Legs Consisting Of:)	1
2	13-287-1-PPP	LEG, OUTER SCISSORS 10K W/BRG (RX45) (Consisting Of:)	1
OR	13-310-1-PPP	LEG, OUTER SCISSORS 12K W/BRG (RX54) (Consisting Of:)	1
3	13-285-1-PPP	LEG, OUTER SCISSORS 10,000# (RX45)	1
OR	13-309-1-PPP	LEG, OUTER SCISSORS 12,000# (RX54)	1
4	20-2305-1	KIT, RX OUTER BUSHINGS (Not Illus.) (Consisting Of:)	1
5	130-167-2	BEARING, SLEEVE 1.00 X 1.50 INCH	2
6	130-168-2	BEARING, SLEEVE 1.25 X 1.00 INCH	4
7	FIELD OBTAIN	ADHESIVE, LOCTITE #609 (Not Illus.)	A/R
8	13-286-1-PPP	LEG, INNER SCISSORS 10K W/BRG (RX45) (Consisting Of:)	1
OR	13-312-1-PPP	LEG, INNER SCISSORS 12K W/BRG (RX54) (Consisting Of:)	1
9	13-284-1-PPP	LEG, INNER SCISSORS 10,000# (RX45)	1
OR	13-311-1-PPP	LEG, INNER SCISSORS 12,000# (RX54)	1
10	20-2435-1	KIT, RX INNER BUSHINGS (Not Illus.) (Consisting Of:)	1
11	130-167-2	BEARING, SLEEVE 1.00 X 1.50 INCH	2
12	FIELD OBTAIN	ADHESIVE, LOCTITE #609 (Not Illus.)	A/R
13	72-492-1-PPP	BASE ASSEMBLY, RX10 AND RX16	1
14	135-366-2	PIN, RX LEG CONNECTION	2
15	77-290-2	WASHER, FLAT 2.00 X 1.25 INCH	6
16	77-305-2	WASHER, SPECIAL D-RING	4
17	112-18-2	SNAP RING-#5100-125	8
18	135-455-2	PIN, RUNWAY/BASE CONNECTIONS	4
19	112-88-2	SNAP RING, TRUARC 5100-100	8
20	135-456-2	PIN, RUB BLOCK, RX	4
21	77-289-2	WASHER, FLAT 2.00 X 1.00 INCH	4
22	121-257-1	BLOCK ASSEMBLY, SCISSORS RUB (Consisting Of:)	4
23	121-254-2	BLOCK-RUB INSERT	1
24	130-200-2	BEARING-SLEEVE 1.00 X .75	1
25	FIELD OBTAIN	ADHESIVE, LOCTITE #609 (Not Illus.)	A/R
26	121-253-2	BLOCK, SCISSORS RUB	4
27	FIELD OBTAIN	LUBRICANT, EP-2 GREASE	A/R
28	144-126-1-005	LOCK, RX LAMINATED TOP	2
29	144-127-1-005	LOCK, RX LAMINATED BOTTOM	2
30	74-47-2	HEX HEAD CAP SCREW 7/16-14 X 1.25 INCH	4
31	77-53-2	WASHER, LOCK 7/16 INCH INTERNAL TOOTH	4
32	51-1809-005	PLATE, SCISSORS LOCK CYLINDER	1
33	75-19-2	ROUND HEAD MACHINE SCREW 10-24 X 1/2 INCH	4
34	77-11-2	WASHER, LOCK 10 INTERNAL TOOTH	4
35	140-56-2	CYLINDER, LOCK RELEASE	1
36	145-281-2	FITTING, 1/4 HOSE X 1/8 INCH NPT	1
37*	140-87-2*	CYLINDER, RX LIFT V3*	1
38	135-453-2	PIN, SCISSORS LOCK SUPPORT	1
39	112-15-2	SNAP RING, #5133-50 OR EQUAL	2
40	108-209-2	VALVE, VELOCITY FUSE 8.0 GPM	1
41	137-115-2	HOSE, 3/8 INCH RX RACK	1
42	135-454-2	PIN, CYLINDER MOUNT	2
43	125-452-1	SENSOR, LIFT RACK GEN 2	1
44	69-1320-005	COVER, RX-10 SENSOR	1
45	75-317-2	SCREW, THREAD ROLLING 1/4-20 X 5/8 INCH	1
46	75-604-2	SOCKET HEAD CAP SCREW 1/4-20 X .63 INCH LONG	2
47	FIELD OBTAIN	ADHESIVE, LOCTITE #242	A/R
48	135-467-2	PIN, RX SENSOR	1
49	76-32-2	NUT, GRIP 5/16-18	1
50	54-1011-PPP	CHANNEL-HOSE ROUTING BOTTOM	2
51	69-1383-PPP	COVER-HOSE CHANNEL	2
52	75-758-2	BUTTON HEAD CAP SCREW 1/4-20 X 5/8 INCH	8
53	76-85-2	NUT, KEPS 1/4-20	8

\* For cylinder repair kits, refer to hunter web site ([https://www.hunter.com/export/Rack\\_Jack/Spare\\_Parts/RX45.htm](https://www.hunter.com/export/Rack_Jack/Spare_Parts/RX45.htm)).



11250 HUNTER DRIVE BRIDGETON, MO 63044

PPP-Paint Code Required  
A/R-As Required  
REF-Reference



**RUNWAY AIR, WHEEL STOP AND RAMP**

REFER TO NEXT SHEET FOR PARTS DESCRIPTION LISTING

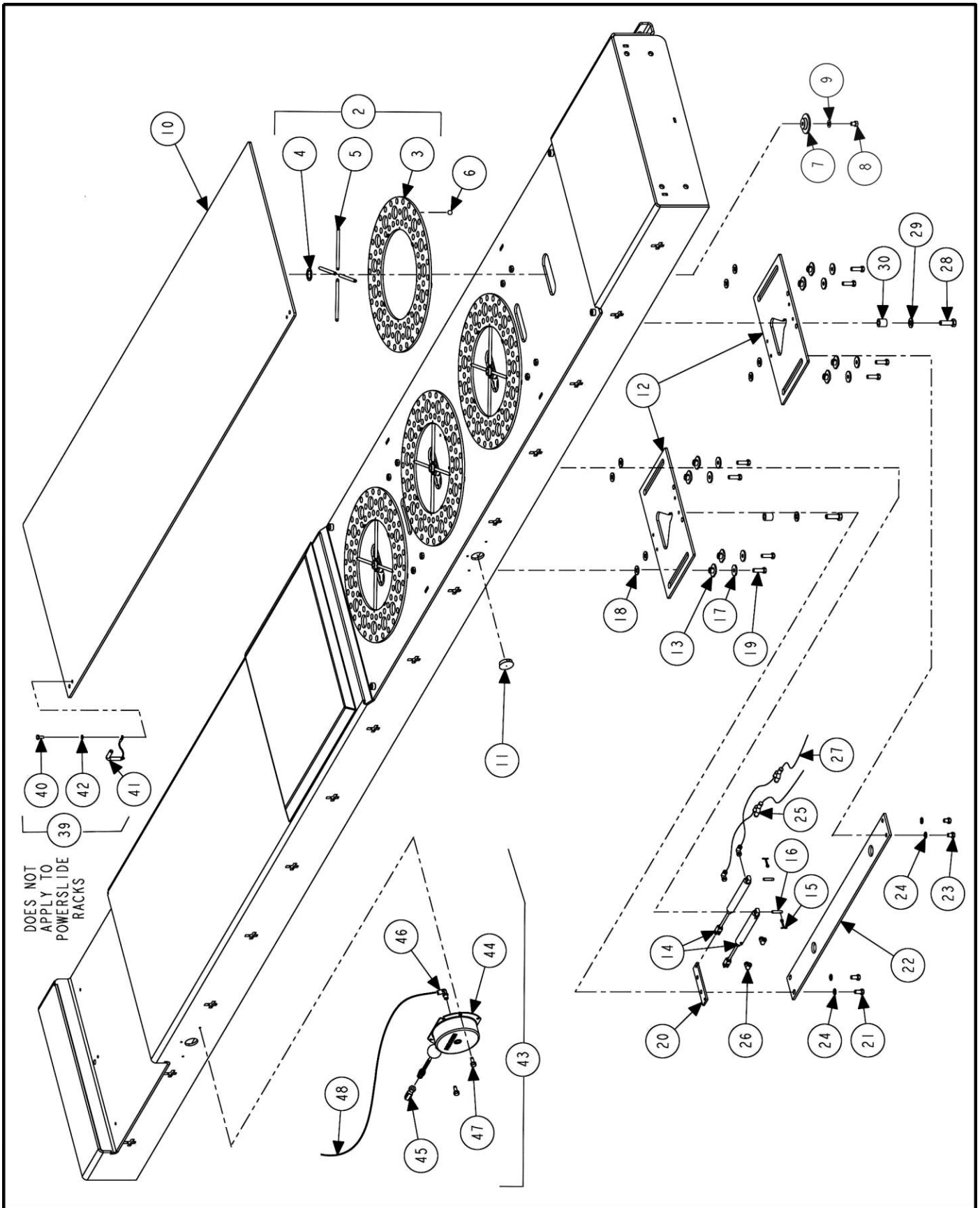
## PARTS DESCRIPTION LISTING

Index No.	Part Number	Description	Qty.
1	20-1618-1	KIT, RX AIR SUPPLY (Not Illustrated) (Consists of:)	1
2	16-321-2	TUBE, 5/16 INCH OUTSIDE DIAMETER	65 FT.
3	145-292-2	FITTING, 5/16 INCH UNION Y	3
4	L30-98	QUICK DISCONNECT SOCKET	2
5	145-295-2	FITTING, 1/4 INCH FPT TO 5/16 INCH TUBE	2
6	145-225-2	FITTING, STREET ELBOW 1/4 INCH NPT	1
7	145-409-2	FITTING, 1/4 INCH TUBE - 1/8 INCH NPT METAL ELBOW	2
8	137-107	HOSE, COIL FRONT (18 COILS)	1
9	137-108	HOSE, COIL REAR (25 COILS)	1
10	74-327-2	SOCKET BUTTON HEAD CAP SCREW 3/8-16 CP	4
11	77-216-2	WASHER, LOCK 3/8 INCH HELICAL	4
12	76-18-2	NUT, GRIP 3/8-16	4
13	106-75-2	SLEEVE, CABLE	3
14	39-42-2	CABLE, AIR LINE KIT	20 FT.
15	94-13-2	TIE, CABLE (Not Illustrated)	4
16	145-419-2	FITTING, BULKHEAD ELBOW 5/16 INCH TUBE - 1/8 INCH NPT	2
17	20-2460-1	KIT, RX10 RACK INSTALLATION (Not Illustrated) (Consisting Of:)	1
18	128-245-2	DECAL, YELLOW & BLACK	8
19	74-170-2	BOLT, ANCHOR 1/2X5 1/2 INCH (Base Anchors) (Not Illustrated)	8
20	74-423-2	BOLT, ANCHOR 1/4 X 2 1/4 INCH HAMMER (Threshold Anchors) (Not Illus.)	10
21	74-349-2	HEX HEAD CAP SCREW 1/2-13 X 3.00 INCH (Leveling Bolts) (Not Illustrated)	12
22	74-11-2	HEX HEAD CAP SCREW 1/2-13X1.25 INCH GRADE 5	16
AND	76-25-2	NUT-HEX 1/2-13	16
23	77-23-2	WASHER-FLAT 1/2 INCH	16
24	137-97-2	HOSE, 1/4 INCH CROSSOVER (Not Illustrated)	1
25	16-728-2	TUBE, SPIRAL CABLE PROTECTOR (Not Illustrated)	6 FT.
26	74-70-2	HEX HEAD CAP SCREW 3/8-16X1.50 INCH	4
27	L31-45-2	SPACER	8
28	76-18-2	NUT-GRIP 3/8-16	4
29	43-149-2	PLUG, 5/8 DIA X .44 INCH LONG-BLACK	4
30	14-1251-1-PPP	BRACKET ASSEMBLY, RAMP RX10	2
31	147-193-1-PPP	RAMP, ASSEMBLY RX10 WITH WHEELS (Consisting Of:)	2
32	147-192-1-PPP	RAMP ASSEMBLY, RX SERIES ("HUNTER" EMBOSSED)	1
33	111-22-2	ROLLER, RAMP	4
34	112-11-2	SNAP RING #5133-75	8
35	97-583-2	SHAFT, RAMP CONNECTION	2
36	97-243-2	SHAFT, RAMP BOTTOM	2
37	51-2422-PPP	PLATE, FRONT WHEEL STOP, RX10	2
38	147-104-1-PPP	RAMP ASSEMBLY, RX-12 EXTENSION (RX54 Only) (Consisting Of:)	2
39	147-103-1-PPP	RAMP, RX-12 EXTENSION ASSEMBLY	1
40	97-243-2	SHAFT, RAMP BOTTOM	2
41	97-217-2	SHAFT, RAMP EXTENSION	2
42	111-22-2	ROLLER, RAMP	6
43	112-11-2	SNAP RING #5133-75	8
44	24-155-2	NAMEPLATE, HUNTER ALUMINUM	2
45	69-1311-1-PPP	COVER WELDMENT, RUNWAY CYLINDER	1
46	77-21-2	WASHER, LOCK 3/8 INCH INTERNAL TOOTH	8
47	74-59-2	HEX HEAD CAP SCREW 3/8 16 X .75 INCH	8
48	20-2532-1	KIT, TURNPLATE (Consisting Of:)	1
49	25-172-1	TURNPLATE ASSEMBLY, 1.5 INCH / 50 mm SS (Refer to Form 7-50) (Not Illus.)	2
50	57-846	BAR, TURN PLATE GUIDE	4
51	75-574-2	SBHCS-1/4-20 X .75 INCH	12
52	76-85-2	NUT-KEPS 1/4-20	12



11250 HUNTER DRIVE BRIDGETON, MO 63044

PPP-Paint Code Required  
A/R-As Required  
REF-Reference

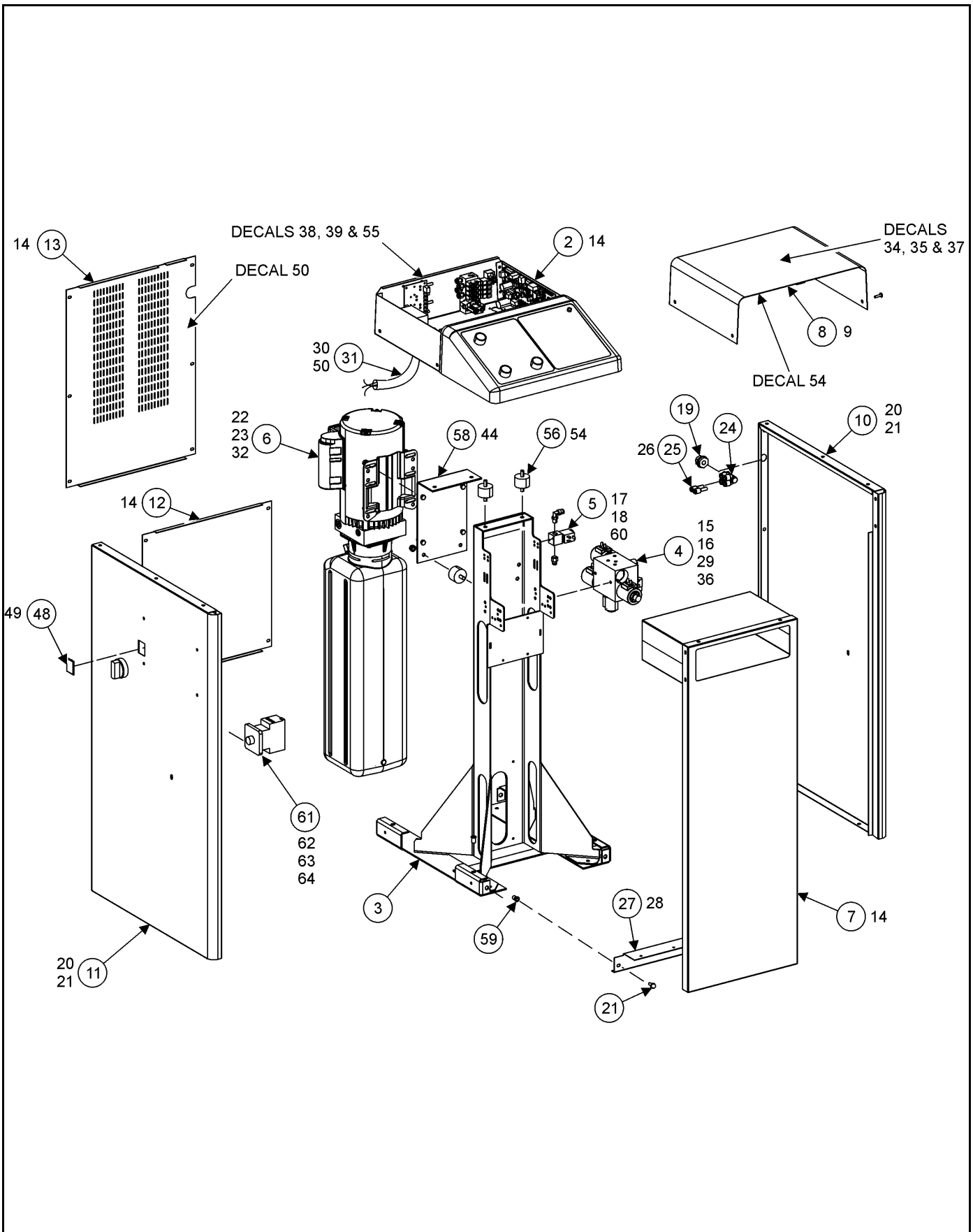


**SLIP PLATE AND POWERSLIDE**  
 REFER TO NEXT SHEET FOR PARTS DESCRIPTION LISTING



## PARTS DESCRIPTION LISTING

Index No.	Part Number	Description	Qty.
1	SEE SHEET 2	RUNWAY ASSEMBLY (Slip Plates Consisting Of:)	1
2	41-146-1	RETAINER ASSEMBLY WIDER RUNWAYS (Consisting Of:)	4
3	41-144-2	RETAINER, 22 1/2 INCH & WIDER RUNWAYS	1
4	WA90-16	WASHER, PLAIN 7/8 INCH #1234	1
5	98-259-2	SPRING, EXTENSION	4
6	130-65-2	BEARING, 9/16 INCH GROUND DELRIN 500P	300
7	41-213-2	RETAINER, SLIDE PLATE	4
8	74-344-2	HEX HEAD CAP SCREW 1/2-13 X .63 INCH	4
9	77-23-2	WASHER, FLAT 1/2 INCH	4
10	51-2771-1-PPP	PLATE, WELDMENT SLIP, 24 INCH WIDE	1
11	43-91-2	PLUG, DOMED 1.50 INCH DIAMETER HOLE	2
12	51-2421-2	PLATE, SLIP PLATE LOCK, RX10 (-PS only)	2
13	113-246-2	BUSHING, FLANGED SLIP PLATE LOCK (-PS only)	8
14	140-65-2	CYLINDER, AIR DOUBLE ACTION 0 .75 BORE x 3.00 INCH STROKE (-PS only)	2
15	135-54-2	PIN, COTTER 3/32 DIAMETER x 1.0 INCH (-PS only)	4
16	135-448-2	PIN. SLIP PLATE LOCK CYLINDER (-PS only)	4
17	77-145-2	WASHER, FLAT 3/8 INCH SPECIAL (-PS only)	8
18	77-66-2	WASHER, FLAT 3/8 INCH (-PS only)	8
19	74-240-2	HEX HEAD CAP SCREW 3/8-16 x 1.25 INCH GRADE 5 (-PS only)	8
20	57-797-005	BAR-CYLINDER MOUNT (-PS only)	1
21	74-59-2	HEX HEAD CAP SCREW 3/8-16X.75 INCH (-PS only)	10
22	57-708	BAR TIE, SLIP PLATE LOCK (-PS only)	1
23	74-41-2	HEX HEAD CAP SCREW 3/8-16 x .50 INCH (-PS only)	2
24	77-21-2	WASHER, LOCK 3/8 INCH INTERNAL TOOTH (-PS only)	12
25	145-318-2	FITTING, 5/32 INCH Y (-PS only)	2
26	145-367-2	1/8 INCH NPT - 5/32 INCH PTC ELBOW (-PS only)	4
27	16-450-2	TUBE, AIR 5/32 INCH OUTSIDE DIAMETER (-PS only)	12 ft.
28	74-140-2	HEX HEAD CAP SCREW 1/2-13 X 1.50 INCH (-PS only)	2
29	77-23-2	WASHER, FLAT 1/2 INCH (-PS only)	2
30	46-641-2	SPACER, RX10 PS (-PS only)	2
31	128-202-2	DECAL, HANDS OFF (-PS only)	1
32	128-203-2	DECAL, FEET OFF	2
33	128-567-2	DECAL, CAUSTIC CLEANERS	1
34	128-46-2	DECAL, STAND CLEAR	2
35	WA90-17	DECAL	1
35	128-927-2	DECAL, WORKSTEP PLACEMENT	1
36	128-180-2	DECAL, SAFETY INSTRUCTIONS	1
37	128-1238-2	DECAL, 10,000# CAPACITY	1
38	24-155-2	NAMEPLATE, HUNTER ALUMINUM	2
39	20-641-1	KIT, 2-LOCK PIN & CABLE ASSEMBLY (Consisting Of:)	2
40	75-333-2	HEX HEAD CAP SCREW 1/4-20 x .63 INCH	2
41	135-208-2	PIN, LOCK WITH CABLE	2
42	77-13-2	WASHER, LOCK 1/4 INCH INTERNAL TOOTH	2
43	20-2265-1	KIT-HOSE REEL FOR -IS LIFTS (-IS only) (Consisting Of:)	1
44	137-109-2	HOSE-REEL RETRACTING -IS LIFTS (-IS only)	4
45	145-341-2	FITTING, AIR CHUCK LOCK-ON OPEN (-IS only)	4
46	145-183-2	FITTING-1/4IN NPT ELBOW SWIVEL (-IS only)	4
47	74-465-2	SCREW, SELF TAPPING 5/16-18 X 1.00 INCH (-IS only)	8
48	16-321-2	TUBE, 5/16 INCH O.D. (-IS only)	190 FT
49	145-184-2	FITTING-1/4 NPT ADAPTOR (-IS only) (Not Shown)	2



# RX CONSOLE

REFER TO NEXT SHEET FOR PARTS DESCRIPTION LISTING

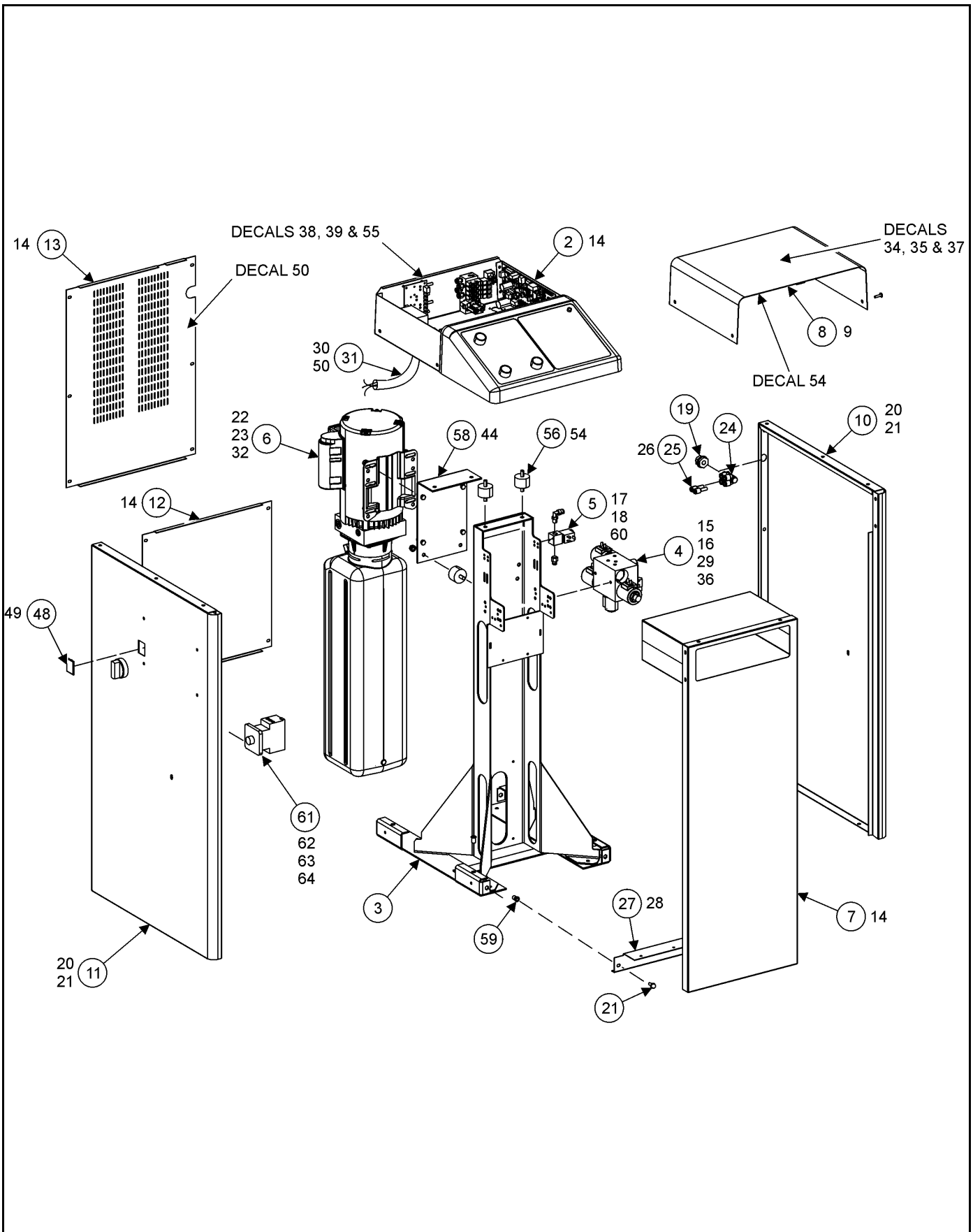
## PARTS DESCRIPTION LISTING

Table 6A

Index No.	Part Number	Description	Qty.
1	CONSOLE	CONSOLE, LIFT RACK (See Sheet 2)	1
2	30-492-1-suffix	CONSOLE, UPPER RX16(-ISF or -PSF) (See Sheet 8)	1
OR	30-463-1-IS	CONSOLE, LIFT UPPER PS/IS (See 5-36, version 08-11)	
3	11-1394-1-005	SUPPORT ASSEMBLY, HYDRAULIC PUMP WITH SHOCKS	1
4	108-266-3	VALVE ASSEMBLY, 2 SPEED LOWER (See Sheet 9)	1
OR	108-278-3	VALVE ASSEMBLY, LIFT RACK LOW FLOW (435E and 215E) (See Sheet 9)	1
OR	108-277-3	VALVE ASSEMBLY, LIFT RACK CONTROLS (216E) (See Sheet 9)	1
5	108-177-2	VALVE, 3 WAY AIR (RX LOCKS 06)	1
6*	139-65-2	PWRUNIT ASS'Y, 3550 PSI 2.2 GPM (208/230/400/460V, 3 PH, 50/60 HZ - 435E)	1
OR	129-243-2	MOTOR, POWERUNIT SPX (Motor Only) (For 139-65-2 Only)	1
OR	139-66-2	PUMP ASSEMBLY, 5 HP 50 HZ 1 PHASE 3500 PSI (230V, 1 PH, 50 HZ - 215E)	1
OR	139-64-2	PUMP ASSEMBLY, 3500 PSI RXDC (230V, 1 PH, 60 HZ - 216E)	1
7	171-245-1-PPP	PANEL ASSEMBLY, LIFT CONSOLE FRONT	1
8	69-1228-1-005	COVER ASSEMBLY, LIFT CONSOLE	1
9	75-352-2	TRUSS HEAD MACHINE SCREW 10-32 X .75 INCH	4
10	71-202-PPP	SIDE PANEL, RIGHT-HAND LIFT CONSOLE	1
11	71-203-PPP	SIDE PANEL, LEFT-HAND LIFT CONSOLE	1
12	69-1359-PPP	COVER REAR, LIFT CONSOLE LOWER	1
13	69-1230-PPP	COVER REAR, PERFORATED LIFT CONSOLE	1
14	75-413-2	SCREW, SELF TAPPING 10-32 X .50 INCH	24
15	75-40-2	HEX HEAD CAP SCREW 1/4-20 X .63 INCH GRADE 5	2
16	77-13-2	WASHER, LOCK 1/4 INCH INTERNAL TOOTH	2
17	145-324-2	FITTING, 1/8 INCH NPT TO 1/4 INCH TUBE 90 (Flush Only)	1
18	145-281-2	FITTING, 1/4 INCH HOSE X 1/8 INCH NPT (Flush Only)	1
19	145-224-2	COUPLING, BULKHEAD	1
20	76-415-2	NUT, HEX INSERT 10-32	18
21	75-317-2	SCREW, THREAD ROLLING 1/4-20 X 5/8 INCH	6
22	145-396-2	FITTING, STRAIGHT THREAD O RING CONNECTOR	1
23	145-397-2	FITTING, SWIVEL NUT BRANCH TEE 3/8 INCH TUBE	1
24	145-398-2	FITTING, DOUBLE BRANCH MALE ELLBOW	1
25	145-399-2	FITTING, REDUCER 5/16 INCH -1/4 INCH TUBE	1 or 2
26	145-400-2	FITTING, PLUG 5/16 INCH TUBE	3
27	171-223-005	PANEL, LIFT CONSOLE FRONT LOWER	1
28	48-56-2	RIVET, BLIND 3/16 X 1/4 INCH	4
29	137-98-2	HOSE, 3/8 INCH RM RACK (pump to manifold, 16 inch long, 9/16-18 female ends)	1
30	145-262-2	FITTING, 1/2 INCH PLASTIC CONDUIT	2
31	16-402-2	TUBING, 1/2 INCH PLASTIC CONDUIT	20 in.
32	145-296-2	FITTING, CAP 3/8 INCH JIC	1

\* Lifts shipped after December 2012 use one speed power units only.

NOTE: Parts 33 through 67 for sheet 6 are located in Table 6B on next page. (Sheet 6 is repeated.)



## POWER UNIT REPLACEMENT COMPONENTS

REFER TO NEXT SHEET FOR PARTS DESCRIPTION LISTING

## PARTS DESCRIPTION LISTING

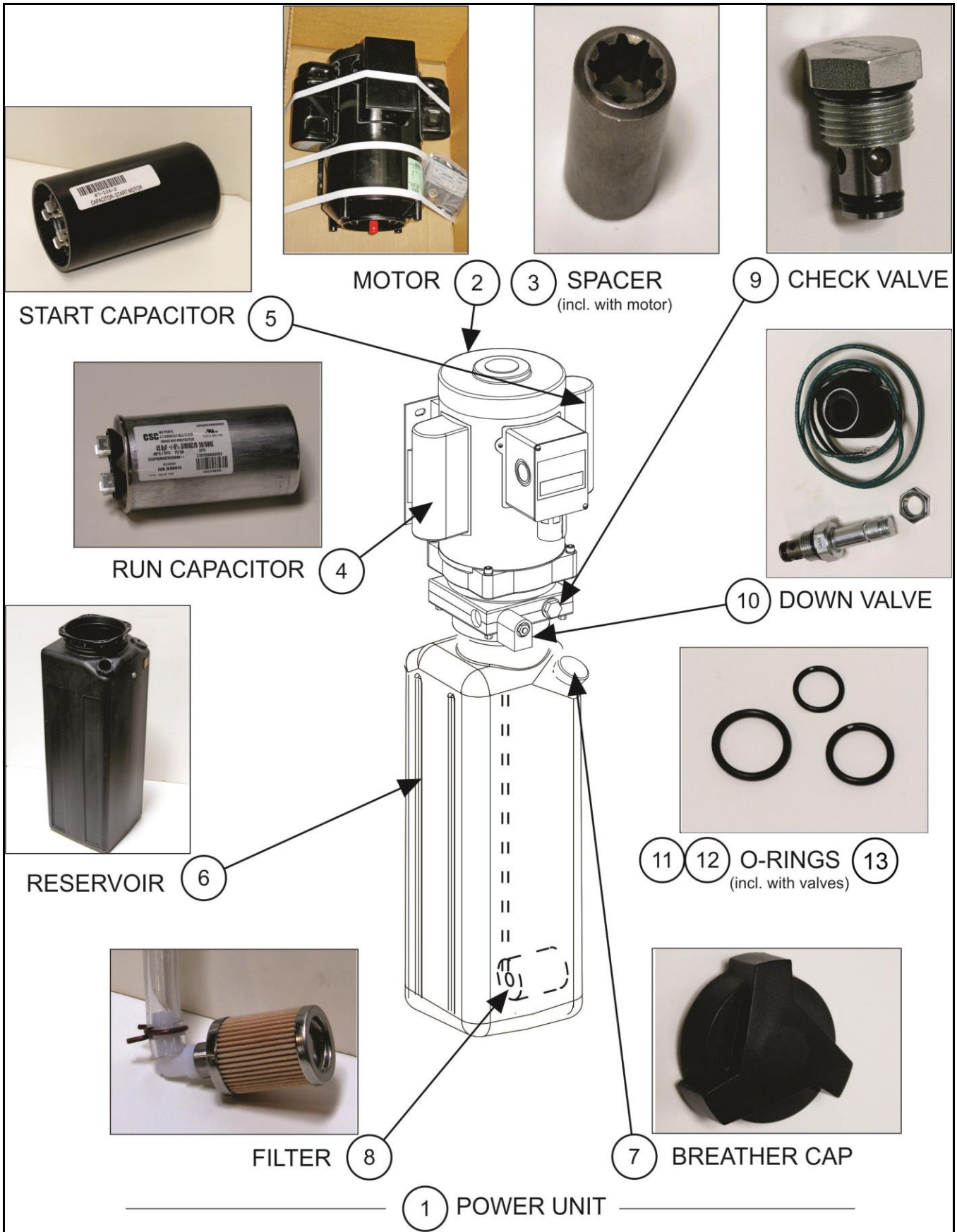
Table 6B

Index No.	Part Number	Description	Qty.
33	94-13-2	TIE-CABLE (Not Illustrated)	5
34	128-1165-2	DECAL, DUTY CYCLE 60/540	1
35	128-1389-2	DECAL, RX16 OPERATION	1
36	37-701-1 (37-618-1)*	WIRE ASSEMBLY, SOLENOIDS RX10 TWO SPEED	1
37	128-158-2	DECAL, SERVICE WARNING (Not Illustrated)	1
38	128-309-2	DECAL, DISCONNECT POWER DANGER	1
39	128-310-2	DECAL, LOCKOUT POWER DANGER	1
40	16-321-2	TUBE, 5/16 INCH OUTSIDE DIAMETER (Inflation Station Only) (Not Illus.)	15 in.
41	16-423-2	TUBE, AIR .172 INCH INSIDE DIA. (To Locks and PowerSlide) (Not Illus.)	18 in.
42	21-40-2	CONNECTOR, WIRE NUT TYPE B (Not Illustrated)	2
43	21-27-2	CONNECTOR, SCOTCHLOK TYPE Y (Not Illustrated)	2
44	77-67-2	WASHER, FLAT 1/4 INCH	4
45	38-1062-2	CABLE, SENSOR 75 FEET (Burndy) (Not Illus.) (Supplied Only with IS and PS)	1
46	128-368-2	TAG, SAFETY WARNING CARD (Not Illustrated)	1
47	94-34-2	TIE, WIRE 6 1/8 INCH FOR #8 SCREW (Not Illus.)	1
48	69-1255-2	COVER, RACK LIGHT SWITCH	1
49	76-221-2	NUT, PUSH ON 3/16 INCH STUD BP	2
50	128-975-2	DECAL, GSP97XX PTB	1
51	37-271	WIRE LEAD, POWER	2
52	NOT USED	NOT USED	-
53	NOT USED	NOT USED	-
54	128-1374-2	DECAL, RX CONSOLE WIRING	1
55	128-1161-2	DECAL, ALI SAFETY LABEL WSLI01	1
56	98-440-2	SPRING, VIBRATION DAMPING HYDRAULIC PUMP	4
57	76-177-2	NUT, KEPS 5/16-18	12
58	11-1288-1-005	SUPPORT ASSEMBLY, SHOCK MOUNT HYDRAULIC PUMP	1
59	76-414-2	NUT, HEX INSERT 1/4-20	6
60	75-26-2	ROUND HEAD MACHINE SCREW 8-32 X 1/2 INCH	2
61	18-475-2	SWITCH EMERGENCY STOP (Only 435E and 215E)	1
62	38-1007-2	CABLE, 16/5 POWER 600V SO (Only 435E and 215E)	20 IN
63	12-27-2	CLAMP, CABLE 1/2IN (Only 435E and 215E)	1
64	38-1081	CABLE, EMERGENCY SWITCH RX40 (Only 435E and 215E)	1
65	38-1012-1	CABLE ASSEMBLY, MOTOR BLACK RX40 (Only 435E and 215E) (Not Illus.)	1
66	38-1013-1	CABLE ASSEMBLY, MOTOR RED RX40 (Only 435E and 215E) (Not Illus.)	1
67	38-1014-1	CABLE ASSEMBLY, MOTOR ORANGE RX40 (Only 435E and 215E) (Not Illus.)	1

\* New style harness without diodes is listed first (then old style harness with diodes is listed in parentheses). Care needs taken when replacing a wiring harness on hydraulic manifolds. To prevent control board damage, a wiring assembly with diodes (old style) is required when older coils without internal diodes are present.

## NOTE:

Parts 1 through 32 for sheet 6 are located in Table 6A on previous page. (Sheet 6 was repeated.)

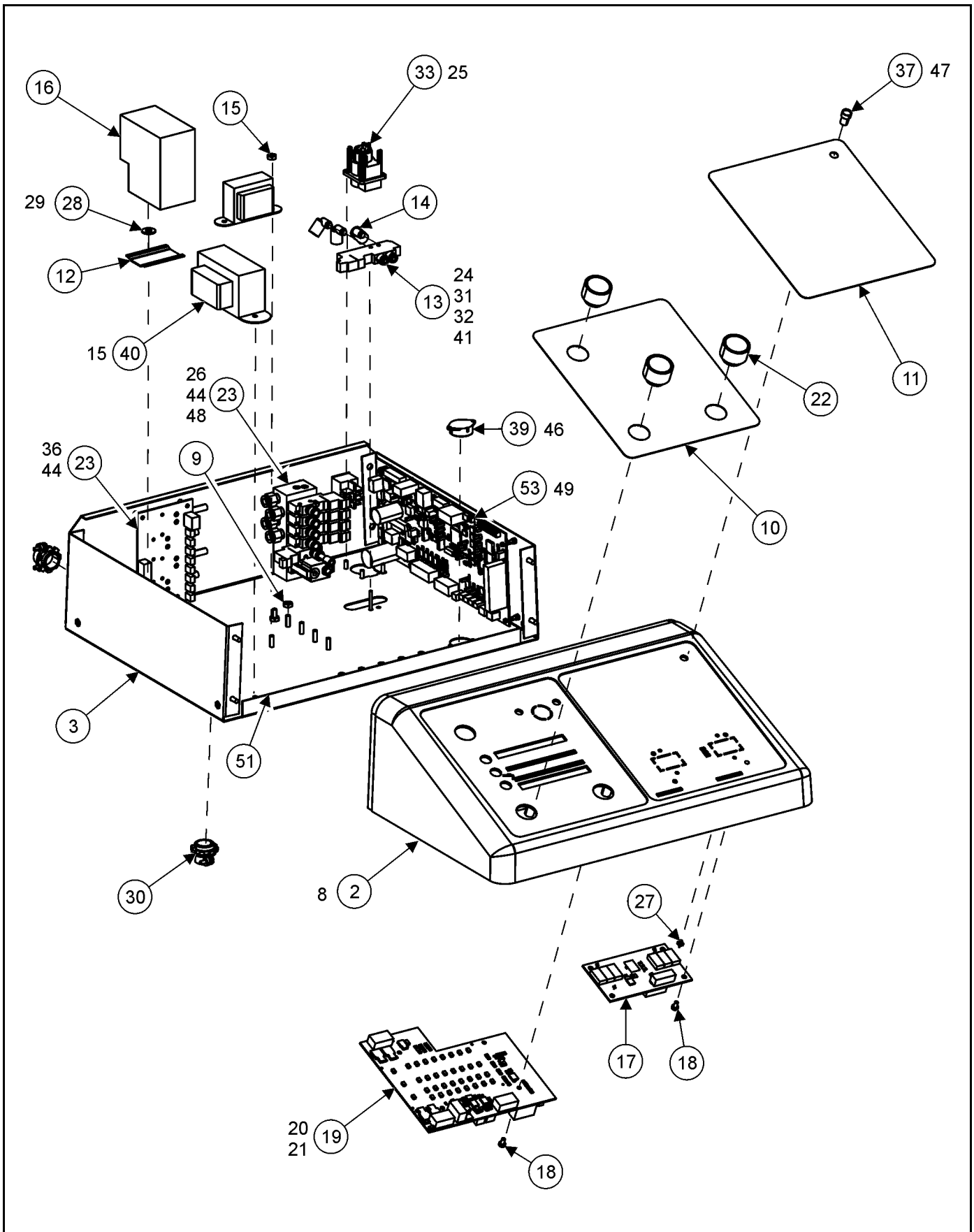


## POWER UNIT REPLACEMENT COMPONENTS

REFER TO NEXT SHEET FOR PARTS DESCRIPTION LISTING

## PARTS DESCRIPTION LISTING

Index No.	Part Number	Description	Qty.
1	139-64-2	POWER UNIT, L44X 3500 PSI 2.8GPM (Domestic: 208/230 V / 1 PH / 60 Hz)	1
OR	139-66-2	PUMP ASSEMBLY, 5HP 50HZ 1PH 3500PSI (Export -50E Models Only - 208/230 V / 1 PH / 50 Hz))	1
OR	139-65-2	POWER UNIT ASSEMBLY, 3550 2.2GPM 50HZ (Export -435E Models Only - 230/380/400 V / 3 PH / 50 Hz)	1
2	129-240-2	MOTOR, POWER UNIT SPX K-427 - REPLACEMENT MOTOR (SPX) (Domestic: 208/230 V / 1 PH / 60 Hz) typically in stock	1
OR	129-242-2	MOTOR, POWER UNIT SPX 5043-AC - REPLACEMENT MOTOR (SPX) (Export 208/230 V / 1 PH / 50 Hz) NOT in stock	1
OR	129-260-2	MOTOR, REPLACEMENT FOR 139-65-2 - REPLACEMENT MOTOR (SPX) (Export 230/380/400 V / 3 PH / 50 Hz) NOT in stock	1
3	20-2262-2	KIT-SPACER AND COUPLING SPX P.U (motor to pump coupling) (included with replacement motors)	1
4	87-118-2	CAPACITOR, MOTOR RUN SPX (for domestic 208/230 V / 1 PH / 60 Hz) (ref Form 5918-T)	1
5	87-126-2	CAPACITOR, MOTOR START (SPX P.U.) (for domestic 208/230 V / 1 PH / 60 Hz)	1
6	139-59-2	PUMP, RESERVOIR PLASTIC (Replacement black reservoir for SPX-Fenner power units)	1
7	53-119-2	CAP, BREATHER PLASTIC TANK (replacement, plastic filler cap for plastic reservoirs)	1
8	20-1606-1	KIT, OIL FILTER (includes: clear vinyl suction hose, hose clamp, elbow fitting, 15 micron suction filter and instructions (Ref form 4685-T))	1
9	108-109-2	VALVE, CHECK POWER UNIT (SPX - Fenner)	1
10	108-143-2	VALVE, 2-WAY SOLENOID 18 inch wires (a.k.a: lower or down valve)	1
11	124-146-2	SEAL, O-RING 910 (for 7/8-14 threaded valve) (Use to replace o-ring of existing valve; replacement valves come with an o-ring.)	A/R
12	124-145-2	SEAL, O-RING 908 (for 3/4-16 threaded valve) (Use to replace o-ring of existing valve; replacement valves come with an o-ring.)	A/R
13	124-235-2	SEAL, O-RING 0.468ID x 0.078 (for 1170-AA PLUMBING PLUG 9/16" SAE) (Use to replace o-ring of existing plug) (Plug not ill. - side not shown)	A/R



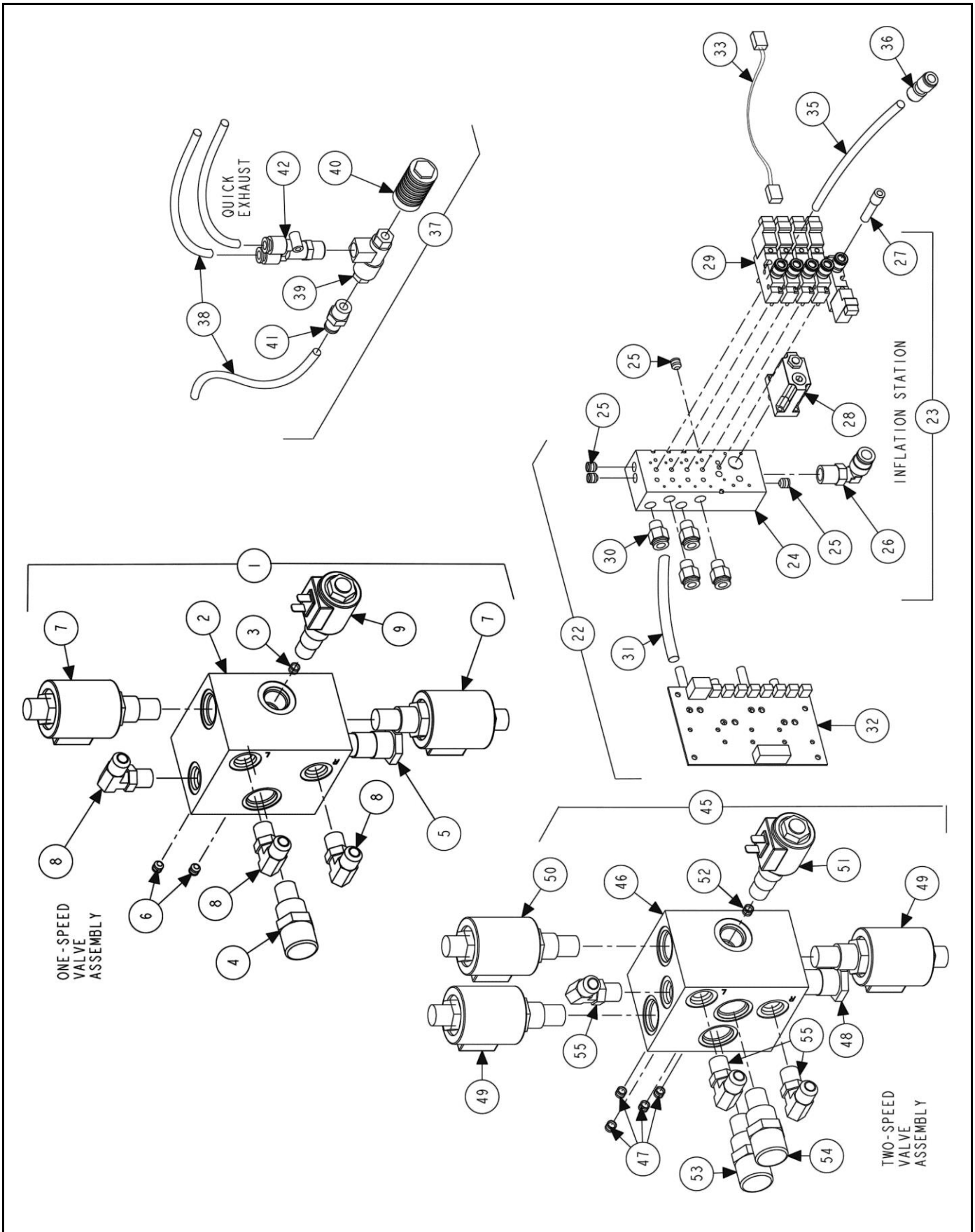
## UPPER RX CONSOLE

REFER TO NEXT SHEET FOR PARTS DESCRIPTION LISTING



## PARTS DESCRIPTION LISTING

Index No.	Part Number	Description	Console	-PSF	-ISF
1	30-492-1-(SUFFIX)	CONSOLE, UPPER RX16 (-ISF or -PSF)	1		
2	11-1436-2	SUPPORT, CONSOLE CONTROL PANEL	1		
3	105-597-1-005	HOUSING ASSEMBLY, LIFT CONSOLE (Includes)	1		
4	134-64-2	STUD, #8-32 X 1/2 INCH (Not Illus.) (on housing floor)	9		
5	46-580-2	SPACER, SNAP TOP STANDOFF (Not Illus.) (for PCA)	6		
6	46-581-2	SPACER, PRESS IN 632 X .562 INCH LNG (Not Illus.) (for PCA)	3		
7	76-415-2	NUT, HEX INSERT 10-32 (Not Illus.) (cover mount)	4		
8	75-32-2	ROUND HEAD MACHINE SCREW 8-32 X 3/8 INCH	4		
9	76-343-2	NUT, LOCK 8-32 NYLON INSERT	5		
10	18-550-2	OVERLAY, MAIN W/O CAPACITY MODE	1		
11	18-551-2	OVERLAY, FEATURE PANEL BLANK	1		
or	18-552-2	SWITCH-FEATURE PANEL PS,	-	1	
or	18-553-2	SWITCH-FEATURE PANEL PS, IS	-		1
12	141-93	EXTRUSION, DIN RAIL	2 IN.		
13	108-197-2	VALVE, 5 PORT 2 POSITION (See Sht 8 )	-	1	1
14	145-395-2	FITTING, ELBOW M5 X .8 X 1/4 INCH TUBE	-	3	3
15	76-262-2	NUT, LOCK 8-32 NYLON INSERT	4		
16	18-536-2	CONTACTOR / NOISE SUPPRESSOR	1		
17	45-1105-1	PCA, RACK INFLATION CONTROL (infl brd)	-		1
18	75-102-2	PAN HEAD MACHINE SCREW 6-32 X .25 INCH	6		4
19	45-1339-1	PCA, RX16 INTERCONNECT (sw brd)	1		
20	66-28-2	SEPARATOR, LIGHT BAFFLE	1		
21	163-112-2	LENS, LIGHT DIFFUSION	1		
22	18-257-2	OPERATOR	3		
23	185-28-1	MANIFOLD ASM, SENSOR AIR(infl main brd) (See Sheet 9 )	-		1
24	75-199-2	ROUND HEAD MACHINE SCREW 4-40 X 7/8 INCH	-	2	2
25	75-359-2	PAN HEAD SHEET METAL SCREW 6 X 3/8 INCH	4		
26	75-63-2	ROUND HEAD MACHINE SCREW 10-32 X .38 INCH	-		2
27	163-91-2	LENS, LIGHT PIPE BIVAR	-		7
28	77-27-2	WASHER, FLAT 10	2		
29	48-56-2	RIVET, BLIND 3/16X1/4 INCH	2		
30	12-27-2	CLAMP, CABLE 1/2 INCH	2		
31	77-15-2	WASHER, LOCK 4	-	2	2
32	76-22-2	NUT, HEX 4-40	-	2	2
33	70-154-1	HARNESS ASSEMBLY, LIFT CONSOLE	1		
34	94-23-2	TIE, HOLDER SNAP IN (Not Illus.)	5		
35	46-603-2	SPACER, NYLON .5 H, .187 INCH HOLE	4		
36	38-1057-1	CABLE, RACK INFLATION CONTROL(J2 infl brd – J3 sw brd)	-		1
37	35-148-1	LED ASSEMBLY, RX CONSOLE (to J8 sw brd)	1		
38	38-1141-1	CABLE, RX16 INTERFACE (J3 main brd – J1 sw brd)	1		
39	70-152-1	HARNESS, (BEEPER) RX40 (to J5 sw brd)	1		
40	40-178-1	TRANSFORMER, LIFT RACK RX (to J14 main brd)	1		
41	38-1092-1	CABLE, SLIP PLATE LOCK MANIFOLD (to J15 main brd)	-	1	1
42	37-580-1	WIRE ASM, RX INFLA. POWER (J 19 main brd – J1 infl brd)	-		1
43	37-601-1	WIRE ASSEMBLY, ON/OFF PUMP (to J11 main brd)	1		
44	38-1058-1	CABLE, RACK INFLATION I/O (J17 main – J2 infl main brd)	-		1
45	38-1085-1	CABLE ASM, 12 PIN RX INTERCONNECT (J2 main – J6 sw brd)	1		
46	48-99-2	RIVET .080 INCH DIAMETER PLASTIC SNAP	2		
47	21-263-2	CONNECTOR, MOLEX 6 .1 HOUSING	1		
48	77-11-2	WASHER, LOCK 10	-		2
49	75-173-2	ROUND HEAD MACHINE SCREW 6-32 X 5/8 INCH	3		
50	128-511-2	DECAL, GROUND (EARTH) (Not Illus.)	1		
51	141-28-2	EXTRUSION, PANEL OPENING	14 IN.		
52	18-270-2	SWITCH, DPST ROCKER	1		
53	45-1343-1	PCA, RX16 RACK CONTROL (main brd)	1		
54	38-1005-1	CABLE, GROUNDING 33 INCH (Not Illus.)	1		



## RX CONSOLE COMPONENTS

REFER TO NEXT SHEET FOR PARTS DESCRIPTION LISTING

## PARTS DESCRIPTION LISTING

Index No.	Part Number	Description	Qty.
1*	108-278-3 (108-201-3)*	VALVE ASSEMBLY, LIFT RACK LOW FLOW (435E and 215E) (Consisting Of:)	1
OR	108-277-3 (108-190-3)*	VALVE ASSEMBLY, LIFT RACK CONTROLS (216E) (Consisting Of:)	1
2	185-27-2	MANIFOLD, LIFT RACK CONTROL (Not Available)	1
3	145-337-2	FITTING, PLUG ORIFICE (435E and 215E) (Installed in port before valve)	1
OR	145-371-2	FITTING, PLUG ORIFICE RMHD (216E)	1
4	108-202-2	VALVE, FLOW CONTROL 2.3 GPM (435E and 215E)	1
OR	108-194-2	VALVE, FLOW CONTROL 3.5 GPM (216E)	1
5	108-79-2	VALVE, FLOW DIVIDER (435E and 215E)	1
OR	108-129-2	VALVE, FLOW DIVIDER RLHD (216E)	1
6	145-336-2	FITTING, EXPANSION PLUG	2
7	108-268-2 (108-191-2)*	VALVE, 2 WAY BLOCKING POPPET	2
8	145-335-2	FITTING, ORING ELBOW	3
9	108-267-2 (108-140-2)*	VALVE, 3 WAY SOLENOID	1
22	185-28-1	MANIFOLD ASSEMBLY, SENSOR AIR (Consisting Of:)	1
23	108-199-1	MANIFOLD ASSEMBLY, INFLATION STATION (Consisting Of:)	1
24	185-24-2	MANIFOLD, RACK INFLATION (Not Available)	1
25	145-336-2	FITTING, EXPANSION PLUG	4
26	145-183-2	FITTING, 1/4 INCH NPT ELBOW SWIVEL	1
27	145-394-2	1/4 INCH PORT PLUG	1
28	136-79-2	REGULATOR MANIFOLD MOUNT AND FITTING	1
29	108-195-2	VALVE, 3-PORT MANIFOLD MOUNT	5
30	145-354-2	FITTING, 1/4 INCH TUBE - 1/8 INCH NPT	4
31	16-864-2	TUBING, AIR .17 INCH I.D. .25 INCH O.D. POLYURETHANE	25 IN.
32	45-1103-1	PCA, RACK INFLATION I/O	1
33	38-1090-1	CABLE ASSEMBLY, RX MANIFOLD	5
34	94-11-2	TIE-CABLE (Not Illustrated)	4
35	16-423-2	TUBE, AIR .172 INCH INSIDE DIAMETER	6 FT.
36	145-381-2	FITTING, 5/16 INCH TO 1/4 INCH UNION PTC	4
37	20-24601	KIT, RX10/RX45 RACK INSTALLATION (Not Illustrated) (Includes:)	1
38	16-423-2	TUBE, AIR .172 INCH INNER DIAMETER (1/4 OUTSIDE DIAMETER)	80 FT.
39	108-101-2	VALVE, QUICK EXHAUST AIR JACK	1
40	145-290-2	FITTING, 1/4 INCH NPT EXHAUST SILENCER	1
41	145-273-2	FITTING, 1/4 INCH HOSE X 1/4 INCH NPT	1
42	145-334-2	FITTING, Y 1/4 INCH NPT TO 1/4 INCH TUBE	1
43	145-310-2	FITTING-1/4 INCH NPT HEX NIPPLE (Not Illustrated)	1
44	136-96-2	FILTER / REGULATOR, RX 150 PSI (Not Illustrated)	1
45*	108-266-3 (108-206-3)*	VALVE ASSEMBLY, 2 SPEED LOWER (Consisting Of:)	1
46	185-30-2	MANIFOLD, 2 SPEED LOWER (Not Available)	1
47	145-336-2	FITTING, EXPANSION PLUG	4
48	108-129-2	VALVE, FLOW DIVIDER RLHD	1
49	108-268-2 (108-191-2)*	VALVE, 2 WAY BLOCKING POPPET	2
50	108-269-2 (108-208-2)*	VALVE, 2 WAY NORMALLY OPEN	1
51	108-267-2 (108-140-2)*	VALVE, 3 WAY SOLENOID	1
52	145-371-2	FITTING .PLUG ORIFICE RMHD (Flow regulator installed in port before valve)	1
53	108-194-2	VALVE, FLOW CONTROL 3.5 GPM	1
54	108-207-2	VALVE, FLOW CONTROL 2.5 GPM	1
55	145-335-2	FITTING, ORING ELBOW	3
56	145-403-2	FITTING, 1/4 TO 5/32 INCH	REF

\* New valves with an internal diode are a direct replacement for old style valves (old valve / assembly part # in parentheses).

Redundant diodes are okay when an internal diode solenoid is wired to external diode.

**IMPORTANT NOTE WHEN ORDERING REPLACEMENT POWER UNIT AND MANIFOLD PARTS:**

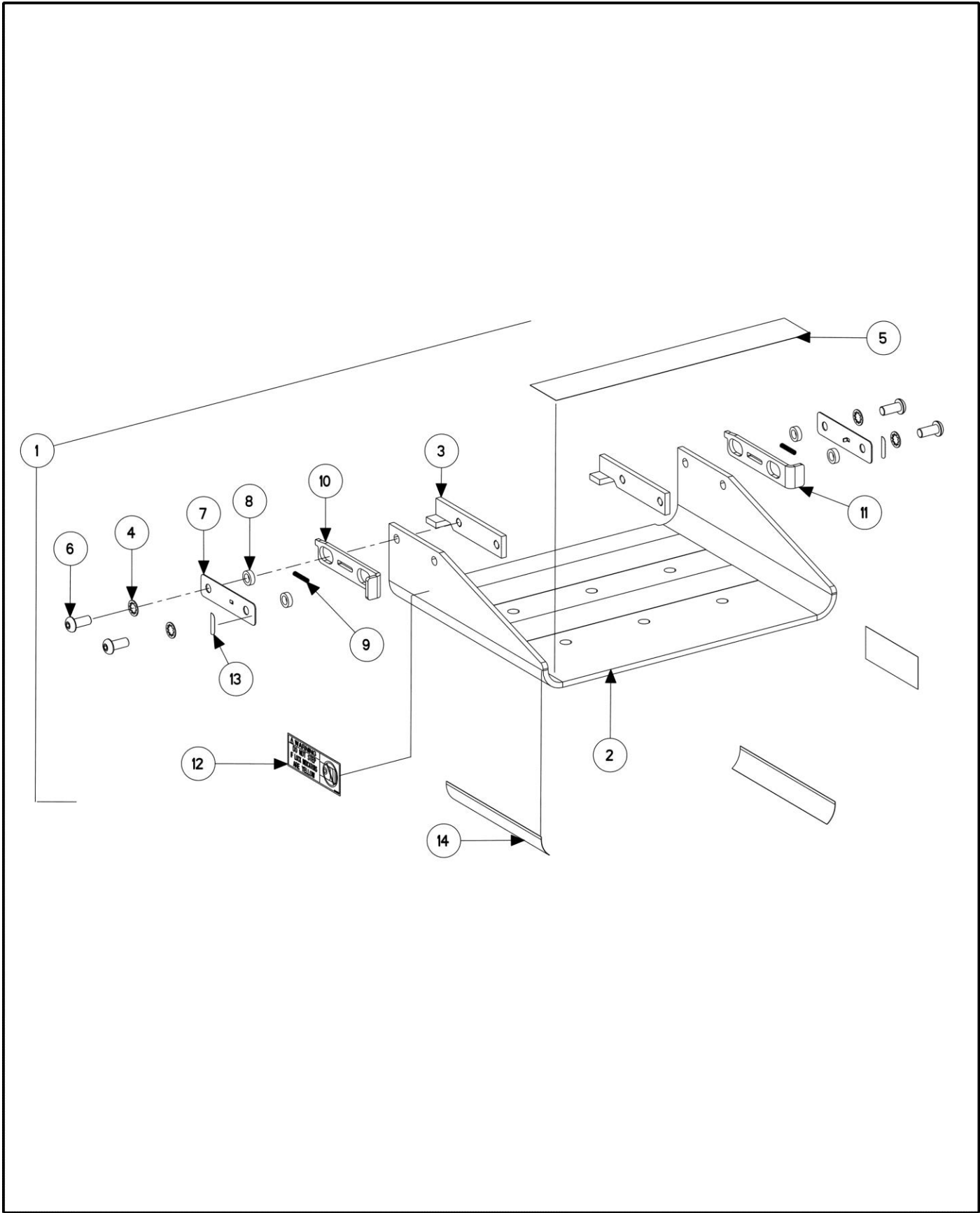
When servicing the manifold, the individual parts should be replaced, not the entire manifold assembly.

It is important to verify the existing equipment in the lift being serviced.



11250 HUNTER DRIVE BRIDGETON, MO 63044

PPP-Paint Code Required  
A/R-As Required  
REF-Reference

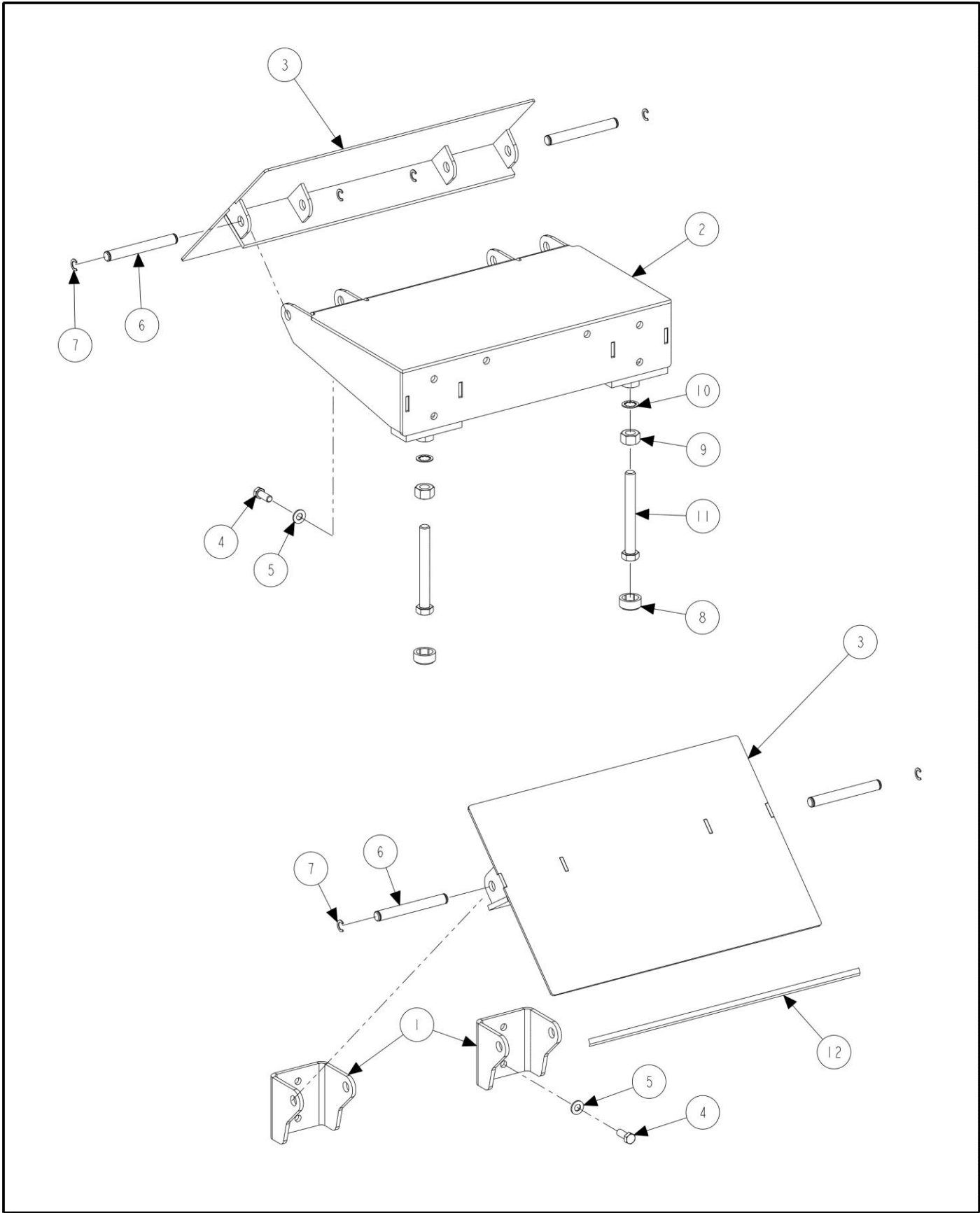


**WORKSTEP**

**REFER TO NEXT SHEET FOR PARTS DESCRIPTION LISTING**

## PARTS DESCRIPTION LISTING

Index No.	Part Number	Description	Qty.
1	51-1696-1	PLATE, WORKSTEP ASSEMBLY (Consisting Of:)	1
2	51-1668	PLATE, WORKSTEP	1
3	14-886-1-005	BRACKET, WORKSTEP HANGER	2
4	77-21-2	WASHER, LOCK 3/8 INCH INTERNAL TOOTH	4
5	162-105-2	TAPE, 2 INCH X 13 INCH NON-SKID	3
6	74-433-2	SOCKET BUTTON HEAD CAP SCREW 3/8-16 X .88 INCH	4
7	69-1083-2	COVER, WORKSTEP LOCK	2
8	46-529-2	SPACER, LOCK GUIDE	4
9	98-398-2	SPRING, WORKSTEP LOCK	2
10	144-79-2	LOCK, WORKSTEP LH	1
11	144-80-2	LOCK, WORKSTEP RH	1
12	128-1005-2	DECAL, WORKSTEP LOCK ENGAGEMENT	2
13	128-1006-2	DECAL, LOCK ENGAGE INDICATOR	2
14	128-245-2	DECAL, YELLOW AND BLACK	2



**FLUSH-MOUNT RAMPS**

REFER TO NEXT SHEET FOR PARTS DESCRIPTION LISTING

## PARTS DESCRIPTION LISTING

Form 5-38e, 06-15d

Sheet 11 of 11

Index No.	Part Number	Description	Pit Qty.
1	14-1226-PPP	BRACKET, RAMP RX10	4
2	51-2464-1-PPP	PLATE, RAMP EXTENSION	2
3	147-141-1-PPP	RAMP, PIT STYLE	4
4	74-11-2	HEX HEAD CAP SCREW 1/2-13 X 1.25 INCH GRADE 5	8
5	77-23-2	WASHER, FLAT 1/2 INCH	8
6	97-583-2	SHAFT, RAMP CONNECTION	8
7	112-11-2	SNAP RING #5133-75	16
8	53-64-2	CAP, BOLT	4
9	76-39-2	NUT, HEX 3/4-10	4
10	77-50-2	WASHER, LOCK 3/4 INCH INTERNAL TOOTH	4
11	74-481-2	HEX HEAD CAP SCREW 3/4-10 X 6.00 INCH	4
12	113-274-2	BUSHING, EDGING PIT RAMP (cut into 2-foot pieces)	8 FT
13	20-2267-1	KIT, IS-P HOSE REEL FILLER PLATES (Not Illustrated)	1
14	51-2308-1	PLATE, PIT HOSE REEL COVER	4
15	74-423-2	BOLT, ANCHOR 1/4 X 2 1/4 INCH HAMMER	16