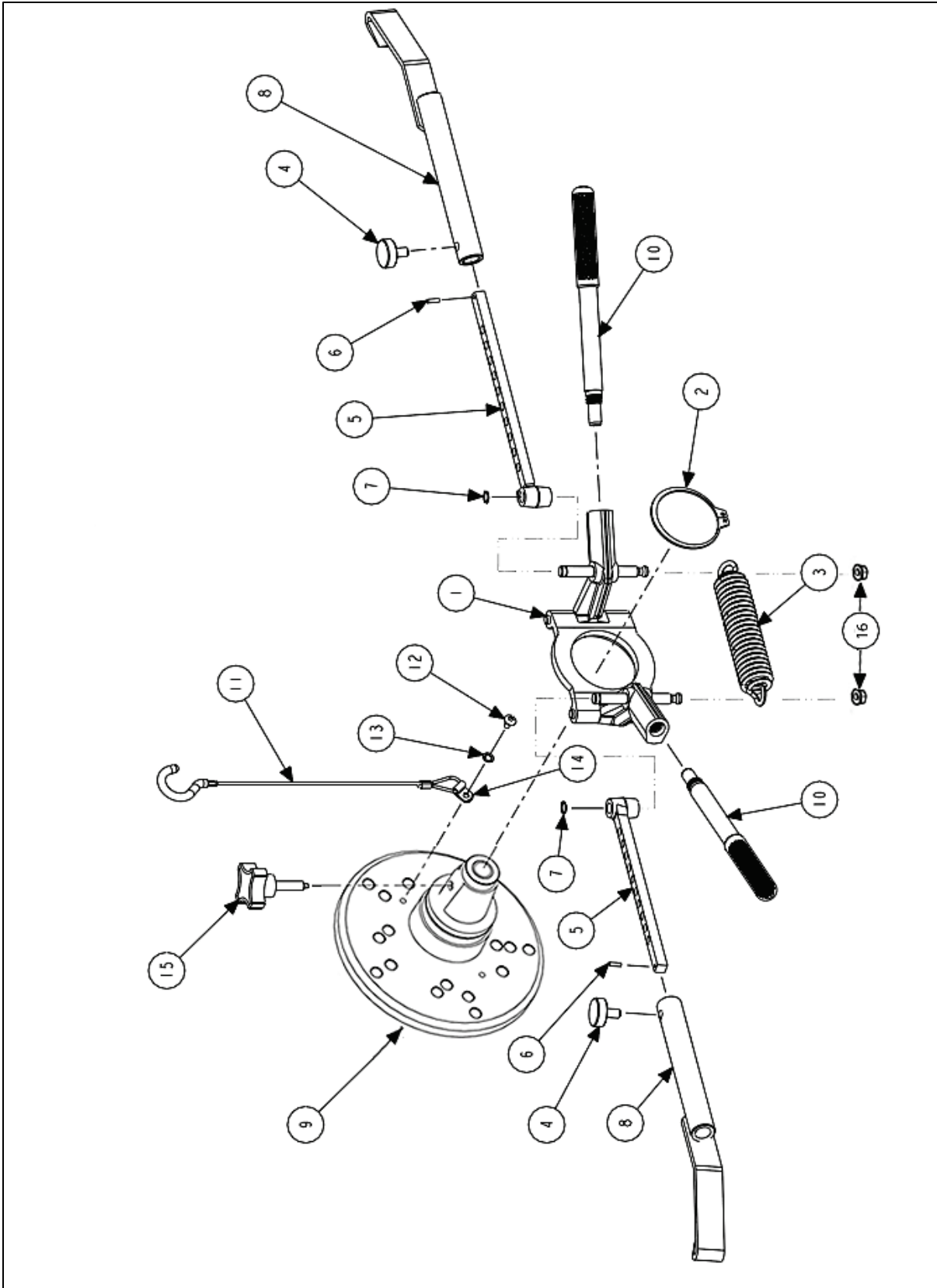


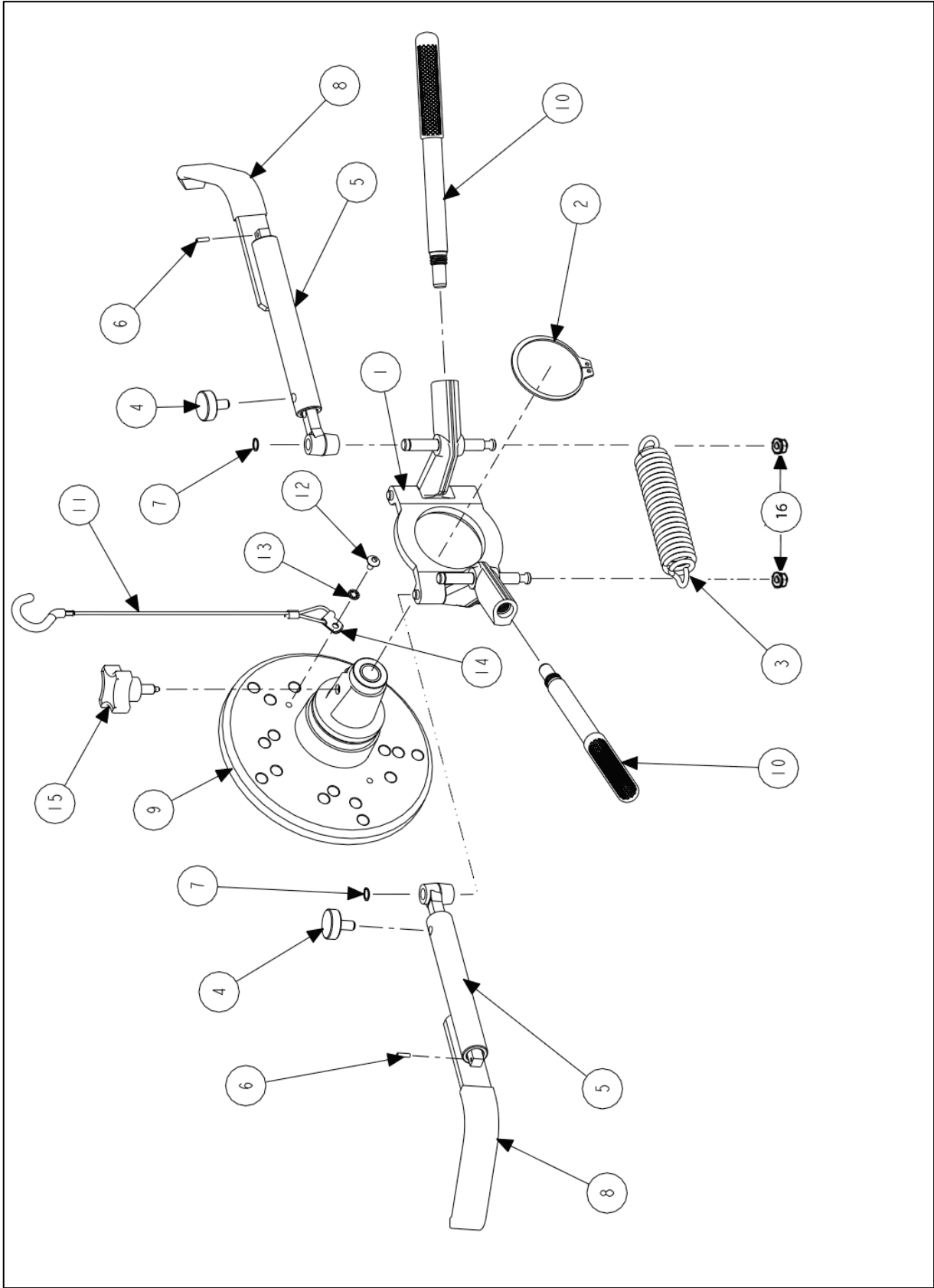
175-215-1/175-349-1 MB ADAPTOR

Index No.	Part Number	Description	Qty.
	175-215-1	MB QUICK CLAMP ADAPTOR ASSEMBLY (Consisting Of :)	1
A	175-256-1	ADAPTOR ASSEMBLY, QUICK CLAMP (See Sheet 2)	1
B	20-1329-1	KIT, WHEEL ADAPTOR PINS (Consisting Of :)	1
C	135-287-2	PIN, WHEEL ADAPTOR, MB 100MM LONG	5
D	43-120-2	PLUG, WHEEL ADAPTOR	14
E	124-122-2	SEAL-O-RING 10MM	5
F	175-349-1	MB QUICK CLAMP LARGE HOOK ADAPTOR ASSEMBLY (Consisting Of :)	1
G	175-347-1	ADAPTOR ASSEMBLY, QUICK CLAMP LARGE HOOK (See Sheet 3)	1
H	20-1329-1	KIT, WHEEL ADAPTOR PINS (Consisting Of :)	1
I	135-287-2	PIN, WHEEL ADAPTOR, MB 100MM LONG	5
J	14-120-2	PLUG, WHEEL ADAPTOR	14
K	124-122-2	SEAL O-RING .10MM	5



175-256-1 MB QUICK CLAMP ADAPTOR ASSEMBLY
SEE REVERSE SIDE FOR PARTS DESCRIPTION LISTING

Index No.	Part Number	Description	Qty.
	175-256-1	ADAPTOR ASSEMBLY, MB QUICK CLAMP	
1	11-865-1	SUPPORT ASSEMBLY, QUICK CLAMP	1
2	112-57-2	SNAP RING #5100-250	1
3	98-357-2	SPRING EXTENSION, QUICK CLAMP	1
4	74-289-2	SCREW, THUMB 5/16-18 x .65 ZP	2
5	57-585-1	BAR ASSEMBLY, QUICK CLAMP	2
6	135-214-2	PIN SPRING 1/8 x 7/16 LG	2
7	112-41-2	SNAP RING #5100-37-ZD	2
8	12-92-1	CLAMP ASSEMBLY, ADAPTOR TIRE	2
9	176-32-3	ADAPTER ASSEMBLY, PIN LOCATOR	2
10	142-117-1	HANDLE ASSEMBLY, QUICK CLAMP	1
11	39-50-1	CABLE ASSEMBLY, SAFETY W/HOOK	2
12	75-541-2	THMS 10-32 x .38 TX BZ SPECIAL	1
13	77-11-2	WASHER, LOCK 10 INT TOOTH	1
14	12-71-2	CLAMP, CABLE 3/16	1
15	34-161-3	KNOB, M8 STUD	1
16	76-462-2	NUT-PUSH ON 3/8" SHAFT	2



175-347-1 MB LARGE HOOK QUICK CLAMP ADAPTOR ASSEMBLY
SEE REVERSE SIDE FOR PARTS DSCRIPTION LISTING

Index No.	Part Number	Description	Qty.
	175-347-1	ADAPTOR ASSEMBLY, MB CLAMP LARGE HOOK	
1	11-865-1	SUPPORT ASSEMBLY, QUICK CLAMP	1
2	112-57-2	SNAP RING #5100-250	1
3	98-357-2	SPRING EXTENSION, QUICK CLAMP	1
4	74-289-2	SCREW, THUMB 5/16-18 x .65 ZP	2
5	57-585-1	BAR ASSEMBLY, QUICK CLAMP	2
6	135-214-2	PIN SPRING 1/8 x 7/16 LG	2
7	112-41-2	SNAP RING #5100-37-ZD	2
8	12-194-1	CLAMP, TIRE HOOK BMW	2
9	176-32-3	ADAPTER ASSEMBLY, PIN LOCATOR	2
10	142-117-1	HANDLE ASSEMBLY, QUICK CLAMP	1
11	39-50-1	CABLE ASSEMBLY, SAFETY W/HOOK	2
12	75-541-2	THMS 10-32 x .38 TX BZ SPECIAL	1
13	77-11-2	WASHER, LOCK 10 INT TOOTH	1
14	12-71-2	CLAMP, CABLE 3/16	1
15	34-161-3	KNOB, M8 STUD	1
16	76-462-2	NUT-PUSH ON 3/8" SHAFT	2