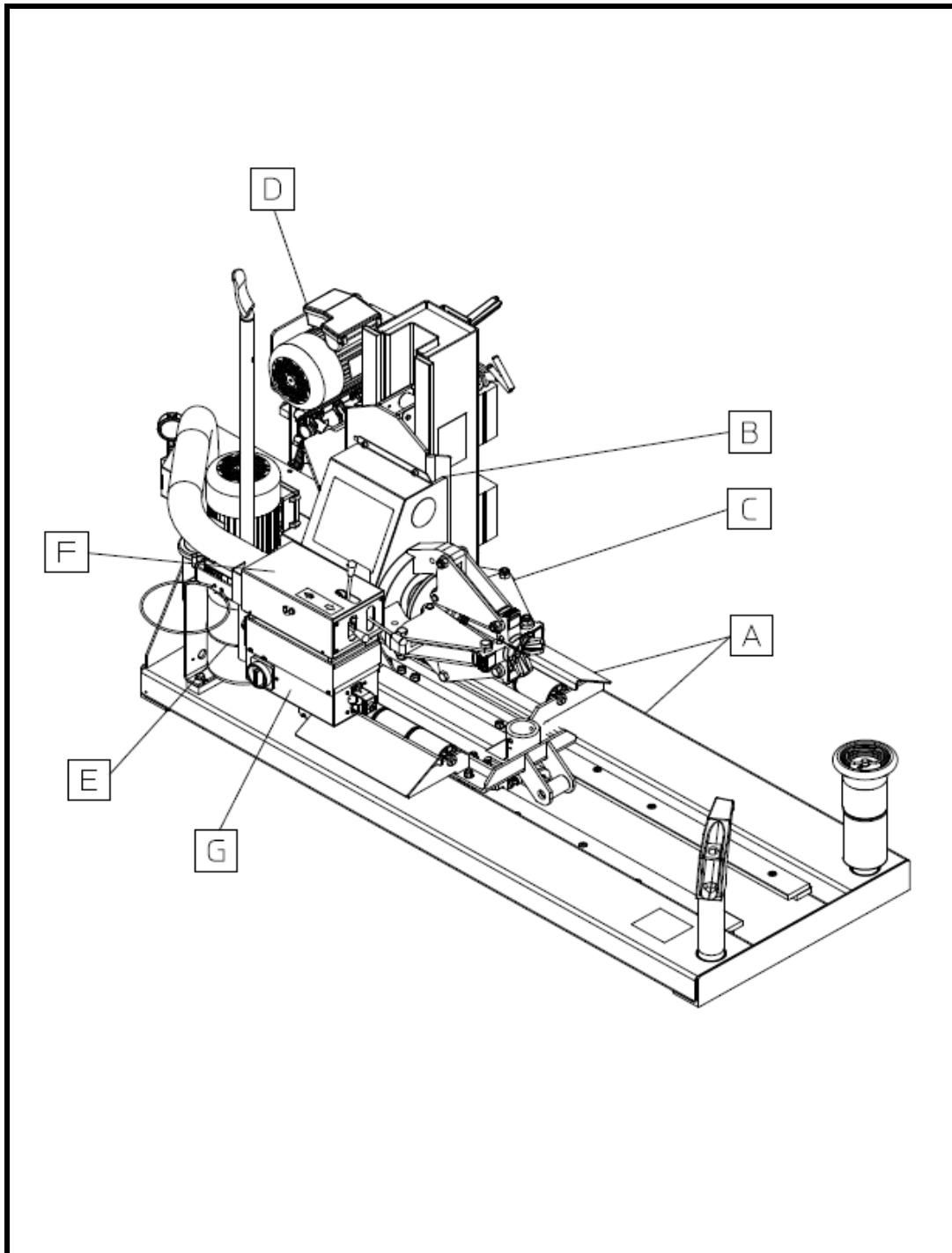


TCX625 HD and CSA Version Tire Changer

©2015 Hunter Engineering Company

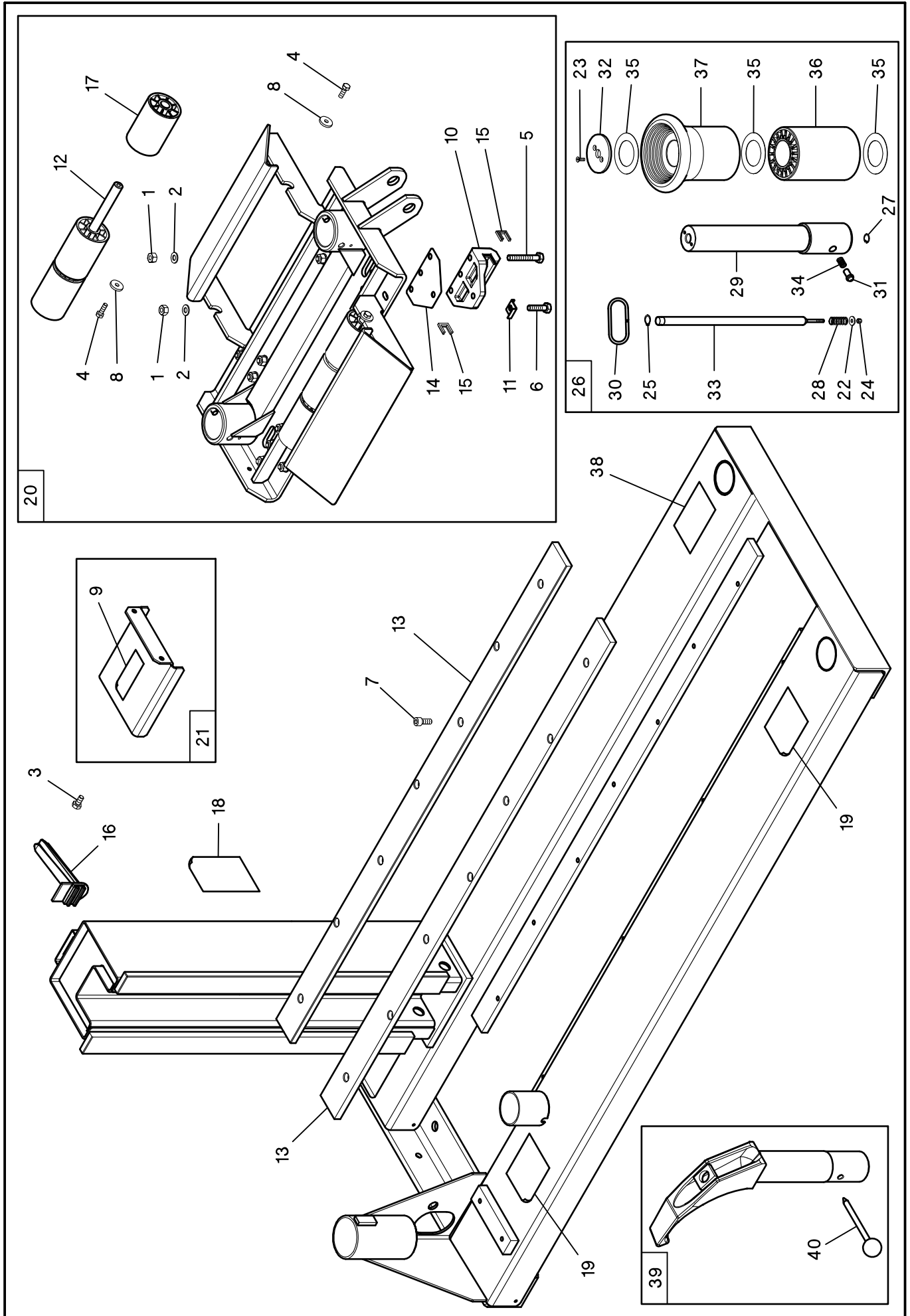


TCX625 Tire Changer

REFER TO NEXT SHEET FOR PARTS DESCRIPTION LISTING

PARTS DESCRIPTION LISTING Supersedes Form 11-4-132231, 10-14

Index No.	Description
A	Frame + horizontal carriage (sheet 3)
B	Vertical carriage (sheet 4)
C	Self-centering chuck (sheet 5)
D	Gearbox Hydraulic unit (sheet 6)
E	Hydraulic unit (sheet 7)
F	Horizontal and vertical cylinder (sheet 8)
G	Electrical safety devices (sheet 9,10)
WD	Wire Diagram (sheet 11)
HD	Hydraulic Diagram (sheet 12)



TCX625 Tire Changer

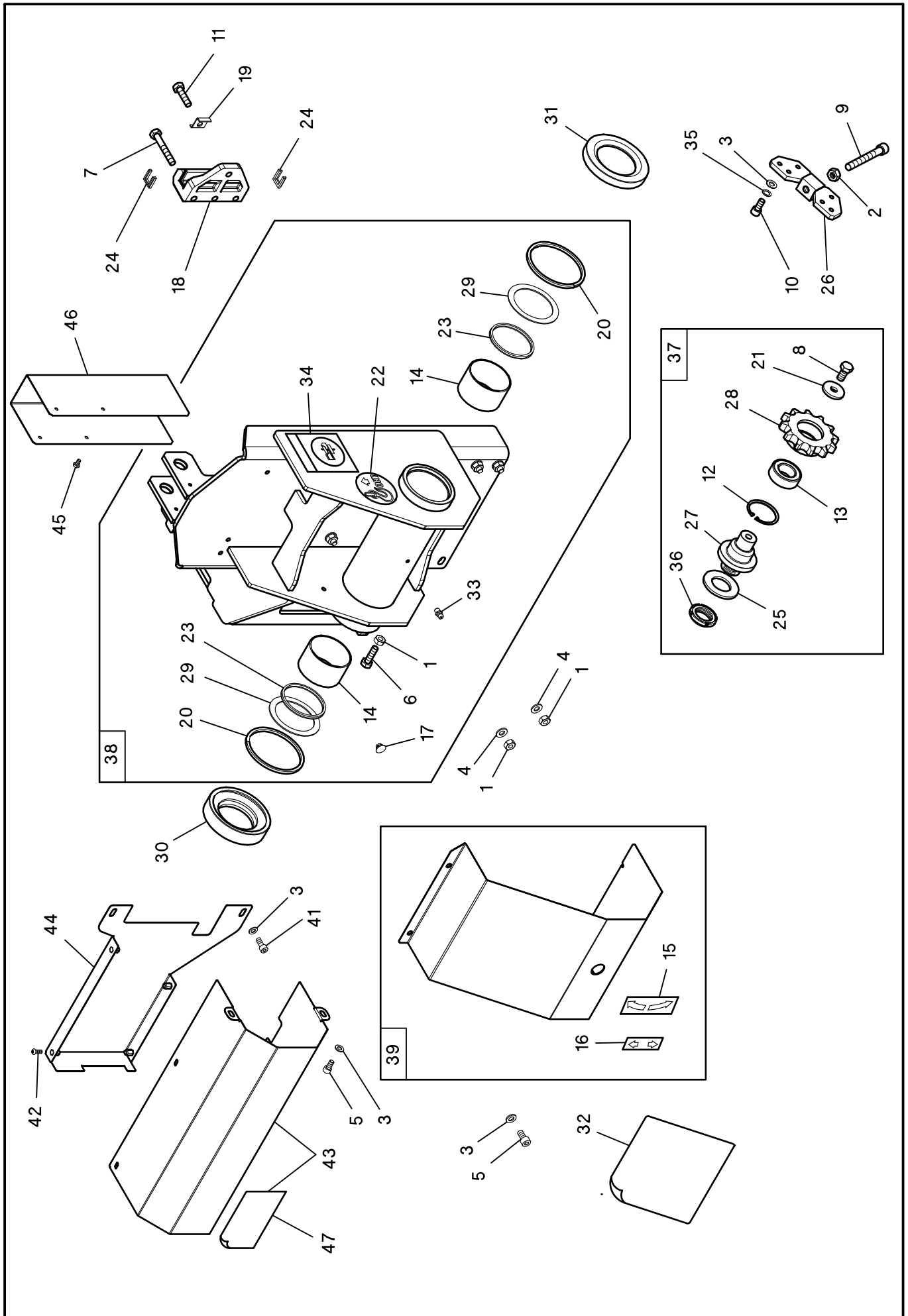
REFER TO NEXT SHEET FOR PARTS DESCRIPTION LISTING

PARTS DESCRIPTION LISTING

Form 11-4-132231, 01-15
Supersedes Form 11-4-132231, 10-14
Sheet 3 of 12

Index No.	Part Number	Description
1	RP11-2-00113	NUT M10
2	RP11-2-00213	WASHER FOR HEX CAP SCREW M10
3	RP11-2-00372	HEXAGON HEAD CAP SCREW M8X16
4	RP11-2-00374	HEXAGON HEAD CAP SCREW M8X25
5	RP11-2-00426	HEXAGON HEAD SCREW M10X70
6	RP11-2-71383	HEXAGON HEAD CAP SCREW M10X40
7	RP11-2-94041	SOCKET HEAD CAP SCREW M10X25
8	RP11-3005194	WASHER D. 8,1X26,5X4
9	RP11-3006653	CARRIAGE LABEL
10	RP11-3007363	CARRIAGE SLIDING BLOCK
11	RP11-3007768	SCREW STOP SQUARE
12	RP11-3016481	ROLLER PIN
13	RP11-3016890	HORIZONTAL GUIDE
14	RP11-3019196	SPACER
15	RP11-3307365	CARRIAGE SCRAPER
16	RP11-3310807	FLANGE HOLDER
17	RP11-3316483	ROLLER
18	RP11-4-402022	WARNING LABEL
19	RP11-4-403135	WARNING LABEL
20	RP11-5-104433	HORIZONTAL CARRIAGE

Index No.	Part Number	Description
21	RP11-5-104865	HORIZONTAL CYLINDER COVER
22	RP11-2-00679	WASHER D.6X18X1,5
23	RP11-2-00692	SOCKET COUNTERSUNK SCREW M5X16
24	RP11-2-01023	NUT WITH POLYAMIDE RING M5
25	RP11-2-01130	RETAINING RING FOR SHAFT D.16
26	RP11-2016581	BBR BEAD BREAKER ROLLER
27	RP11-2-02520	SEEGER INT. D. 17
28	RP11-3010598	HELICAL COMPRESSION SPRING
29	RP11-3016417	ROLLER PIN
30	RP11-3016478	HANDLE
31	RP11-3016480	PAWL
32	RP11-3016491	LOCKING ROLLER PLATE
33	RP11-3016496	TIE ROD
34	RP11-3016504	SPRING FOR PAWL
35	RP11-3094606	WASHER
36	RP11-3316493	TYRE SUPPORT ROLLER
37	RP11-3316494	BEAD BREAKER ROLLER
38	RP11-4-113651	LABEL OIL
39	RP11-2016652	HOOK SHAPED TOOL
40	RP11-2200970	COMPLETE PEG



TCX625 Tire Changer

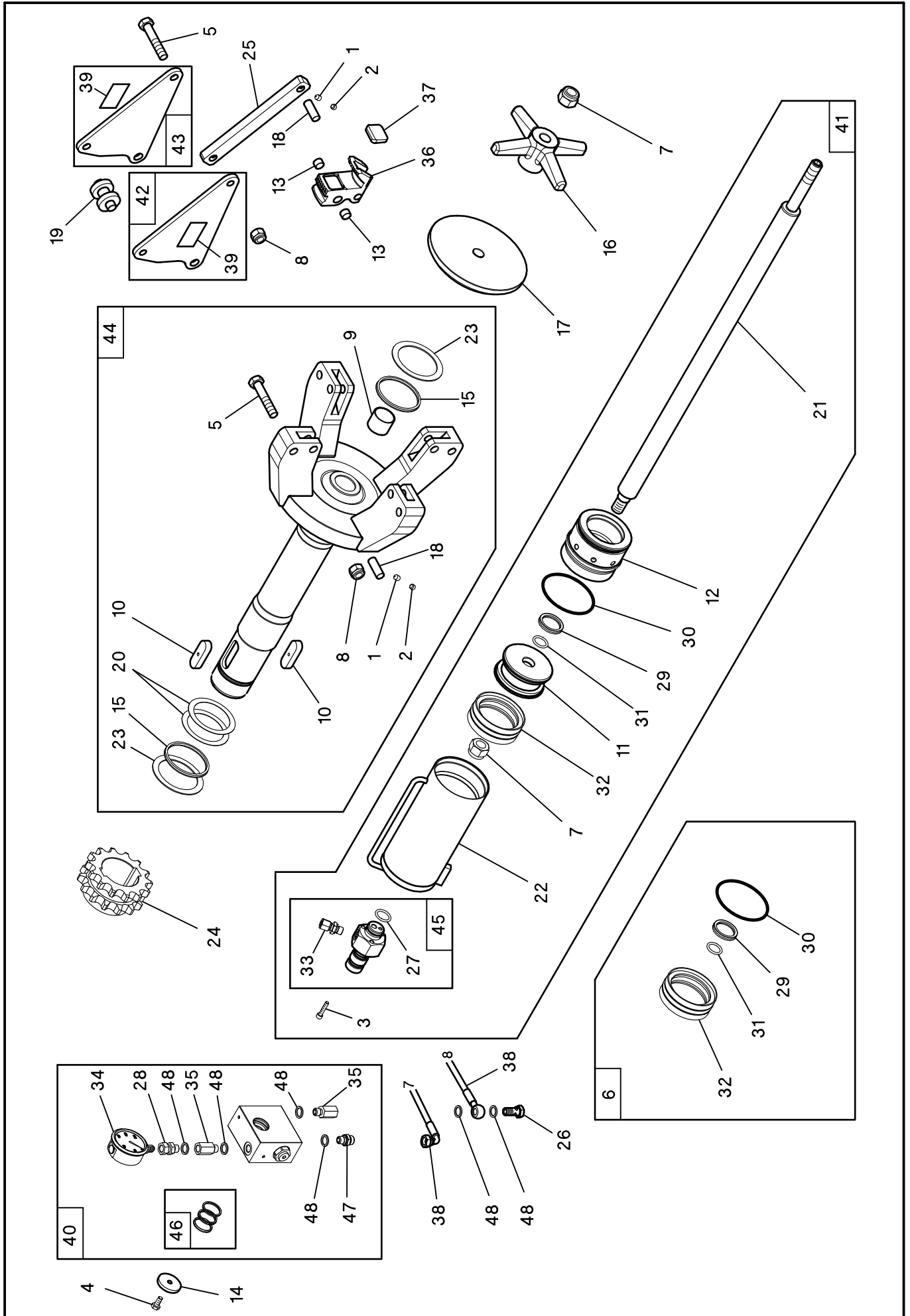
REFER TO NEXT SHEET FOR PARTS DESCRIPTION LISTING

PARTS DESCRIPTION LISTING

Form 11-4-132231, 01-15
Supersedes Form 11-4-132231, 10-14
Sheet 4 of 12

Index No.	Part Number	Description
1	RP11-2-00152	NUT M10
2	RP11-2-00153	NUT M12
3	RP11-2-00212	WASHER FOR HEX CAP SCREW M8
4	RP11-2-00213	WASHER FOR HEX CAP SCREW M10
5	RP11-2-00319	SOCKET HEAD CAP SCREW M8X16
6	RP11-2-00381	HEXAGON HEAD CAP SCREW M10X35
7	RP11-2-00426	HEXAGON HEAD SCREW M10X70
8	RP11-2-01225	SCREW M 12X25
9	RP11-2-03453	SOCKET HEAD CAP SCREW M12X100
10	RP11-2-03529	SOCKET HEAD CAP SCREW M8X18
11	RP11-2-71383	HEXAGON HEAD CAP SCREW M10X40
12	RP11-2-71597	SEEGER INT. D. 55
13	RP11-2-91763	BEARING 30/55/19
14	RP11-3-00658	BUSH 75X80X50
15	RP11-3006652	LABEL
16	RP11-3006654	LABEL
17	RP11-3-00705	CAP D.8
18	RP11-3007363	CARRIAGE SLIDING BLOCK
19	RP11-3007768	SCREW STOP SQUARE
20	RP11-3010250	RING FELT
21	RP11-3011673	WASHER 12.5X40X5
22	RP11-3016865	LABEL
23	RP11-3-10116	GASKET 75/85/6

Index No.	Part Number	Description
24	RP11-3307365	CARRIAGE SCRAPER
25	RP11-4-111031	WASHER 37X66X5
26	RP11-4-111088	SUPPORT FOR TENSIONER SCREW
27	RP11-4-132139	PIN
28	RP11-4-132140	TIGHTENING PULLEY
29	RP11-4-132146	BRONZE WASHER 75,5X97X2
30	RP11-4-132148	SPACER RING (REAR)
31	RP11-4-132150	SPACER RING (FRONT)
32	RP11-4-132157	HUNTER TCX625 LABEL
33	RP11-4211478	GREASER M6
34	RP11-4-403135	WARNING LABEL
35	RP11-447604	SPECIAL WASHER D.8.4
36	RP11-462309	RING NUT M 35X1.5
37	RP11-5-120743	COMPLETE CHAIN TIGHTENER
38	RP11-5-120875	VERTICAL CARRIAGE
39	RP11-5-120876	VERTICAL COVER WITH LABELS
41	RP11-2-00320	SOCKET HEAD CAP SCREW M8X20
42	RP11-2-02174	SCREW M6X16
43	RP11-5-120910	COVER WITH LABEL
44	RP11-5-120879	COVER WITH INSERT
45	RP11-2-00359	HEXAGON HEAD CAP SCREW M6X10
46	RP11-3016488	VERTICAL CYLINDER COVER
47	RP11-4-132518	WARNING LABEL



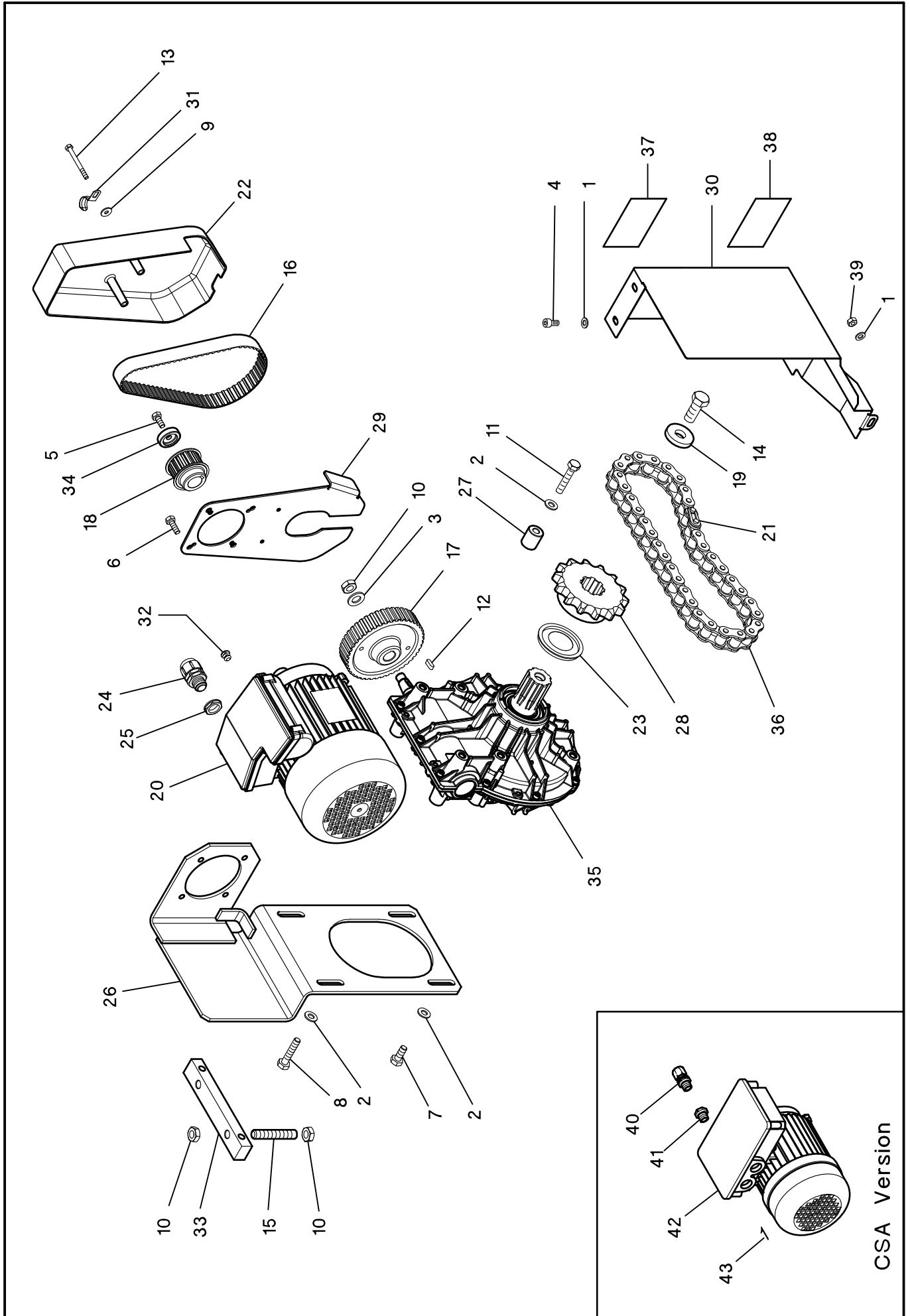
TCX625 Tire Changer

REFER TO NEXT SHEET FOR PARTS DESCRIPTION LISTING

PARTS DESCRIPTION LISTING

Index No.	Part Number	Description
1	RP11-2-00531	SOCKET SET SCREW M6X8
2	RP11-2-00771	SOCKET SET SCREW M6X5
3	RP11-2-00863	SOCKET HEAD CAP SCREW M6X30
4	RP11-2-02761	HEXAGON HEAD CAP SCREW M6X14
5	RP11-2-20014	HEXAGON HEAD CAP SCREW M14X1,5x75
6	RP11-2200551	SET OF GASKETS FOR CYLINDER D.
7	RP11-2-71527	SELF-LOCKING NUT M 20X1,5
8	RP11-2-71961	SELF-LOCKING NUT M14X1,5
9	RP11-3-00623	BUSH D.35X30
10	RP11-3006372	PARALLEL KEY 20X12X60
11	RP11-3009958	PISTON FOR CILINDER D.95
12	RP11-3009959	FRONT FLANGE FOR CYLINDER D.95
13	RP11-3-01291	BUSH 14X10
14	RP11-3016702	WASHER D. 6,25X35,5X5
15	RP11-3-10116	GASKET 75/85/6
16	RP11-321517	CHUCKING CROSS
17	RP11-324262	CHUCK DISC
18	RP11-324263	PIN
19	RP11-324264	ROLLER
20	RP11-4-104408	WASHER 70X90X0.5
21	RP11-4-132142	SHAFT
22	RP11-4-132145	CYLINDER CASING
23	RP11-4-132146	BRONZE WASHER 75,5X97X2
24	RP11-4-132151	DRIVER SPROCKET

Index No.	Part Number	Description
25	RP11-4-132158	SELF-CENTERING CONNECTING ROD
26	RP11-4206347	UNION 1/4" BOLT
27	RP11-4206390	O-RING 4093 (3,53X23,4)
28	RP11-4207139	EXTENSION 1/4"-1/4"
29	RP11-4209724	GASKET RS 35-45
30	RP11-4210040	O-RING 154
31	RP11-4210041	O-RING 212
32	RP11-4210042	GASKET DAS 9575
33	RP11-4210089	UNION 1/4"
34	RP11-4210251	MANOMETER
35	RP11-4221342	SPECIAL NIPLES 1/4" M/F
36	RP11-432824	JAW
37	RP11-432828	RIM SUPPORT
38	RP11-4-330096	HYDRAULIC HOSE L=3500
39	RP11-4-132218	WARNING LABEL
40	RP11-5-120740	REVOLVING UNION COMPLETE
41	RP11-5-120746	COMPLETE CYLINDER
42	RP11-5-120880	LEFT ARM WITH LABEL
43	RP11-5-120881	RIGHT ARM WITH LABEL
44	RP11-5-120882	COMPLETE SELF-CENTERING CHUCK
45	RP11-5-490779	COMPLETE REVOLVING UNION PIN
46	RP11-5-490973	SET OF GASKETS FOR ROTAT.UNION
47	RP11-86200137	SPECIAL NIPPLE 1/4" - M14X1.5
48	RP11-86500153	BONDED SEALS RG1/4



TCX625 Tire Changer

REFER TO NEXT SHEET FOR PARTS DESCRIPTION LISTING

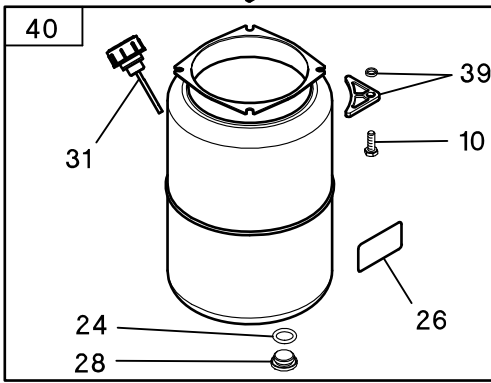
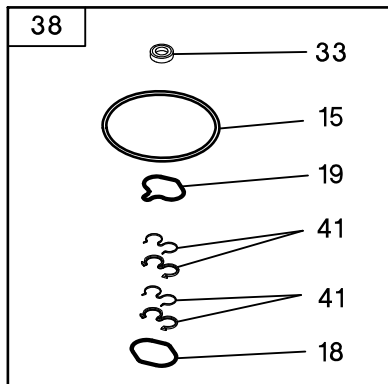
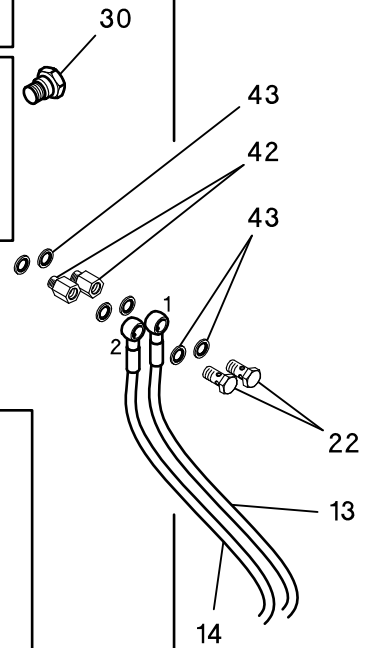
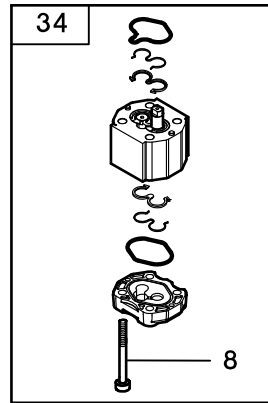
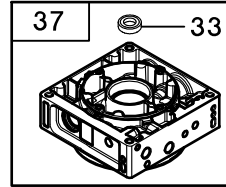
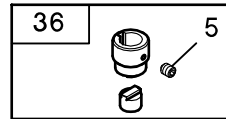
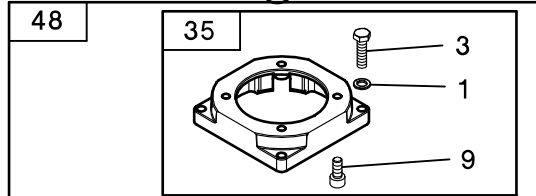
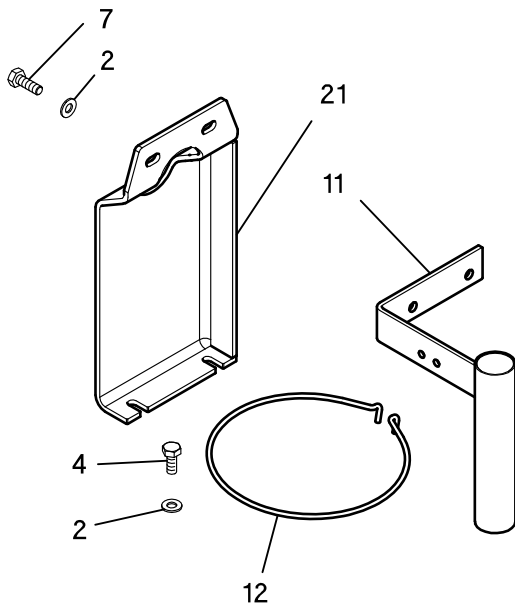
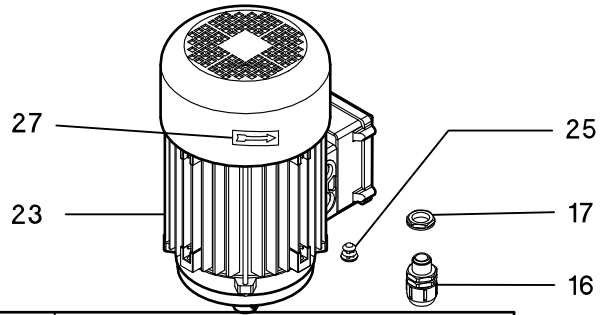
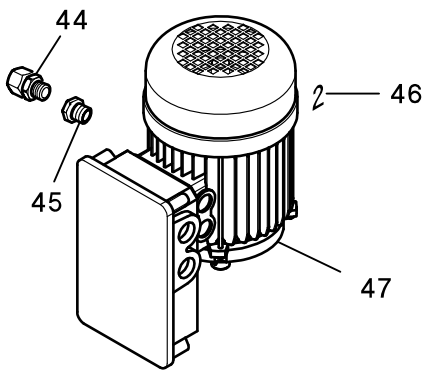
PARTS DESCRIPTION LISTING

Form 11-4-132231, 01-15
Supersedes Form 11-4-132231, 10-14
Sheet 6 of 12

Index No.	Part Number	Description
1	RP11-2-00212	WASHER FOR HEX CAP SCREW M8
2	RP11-2-00213	WASHER FOR HEX CAP SCREW M10
3	RP11-2-00215	WASHER FOR HEX CAP SCREW M14
4	RP11-2-00319	SOCKET HEAD CAP SCREW M8X16
5	RP11-2-00373	HEXAGON HEAD CAP SCREW M8X20
6	RP11-2-00374	HEXAGON HEAD CAP SCREW M8X25
7	RP11-2-00380	HEXAGON HEAD CAP SCREW M10X25
8	RP11-2-00424	HEXAGON HEAD CAP SCREW M10X50
9	RP11-2-00679	WASHER D.6X18X1,5
10	RP11-2-00941	HEXAGON THIN NUT M14
11	RP11-2-01046	HEXAGON HEAD CAP SCREW M10X55
12	RP11-2-01950	PARALLEL KEY 6X6X18
13	RP11-2-02667	HEXAGON HEAD CAP SCREW M6X65
14	RP11-2-71441	HEX. HEAD CAP SCREW M16X1,5X40
15	RP11-2-94133	SOCKET SET SCREW M14X80
16	RP11-3-00587	TOOTHED BELT L=100
17	RP11-3016449	PULLEY Z44
18	RP11-3016564	TOOTHED PULLEY Z18 (1PH)
19	RP11-3094668	TURNTABLE WASHER
20	RP11-3-10117	ELECTRIC MOTOR 1PH 230V 60HZ
21	RP11-3-10118	MASTER LINK FOR CHAIN
22	RP11-3316355	GEAR BELT COVER

Index No.	Part Number	Description
23	RP11-3316489	BEARING COVER
24	RP11-3-90155	UNION M20X1.5
25	RP11-3-90156	PLASTIC RING NUT M20X1.5
26	RP11-4-118933	MOTOR SUPPORT 1PH
27	RP11-4-132141	SPACER
28	RP11-4-132154	GEAR MOTOR
29	RP11-4-132155	COVER HOLDER
30	RP11-5-120911	GEAR-BOX COVER WITH LABELS
31	RP11-4216590	HOSE CLAMP 19-20MM
32	RP11-424714	CAP D.10
33	RP11-4-406214	MOTOR REGULATING BAR
34	RP11-4-406217	DRIVING PULLEY WASHER
35	RP11-5-120747	GEAR-BOX WITH PULLEY
36	RP11-5-120752	COMPLETE CHAIN
37	RP11-4-132518	WARNING LABEL
38	RP11-4-403135	WARNING LABEL
39	RP11-2-00151	NUT M8
40	RP11-3-10026	TIGHTNESS CABLE HOLDER M20x1,5
41	RP11-3-10027	ADAPTER M25X1,5 - M20X1,5
42	RP11-3-10191	ELECTRIC MOTOR 1PH 230V 60HZ CSA
43	RP11-4-403545	MOTOR LABEL

CSA Version



TCX625 Tire Changer

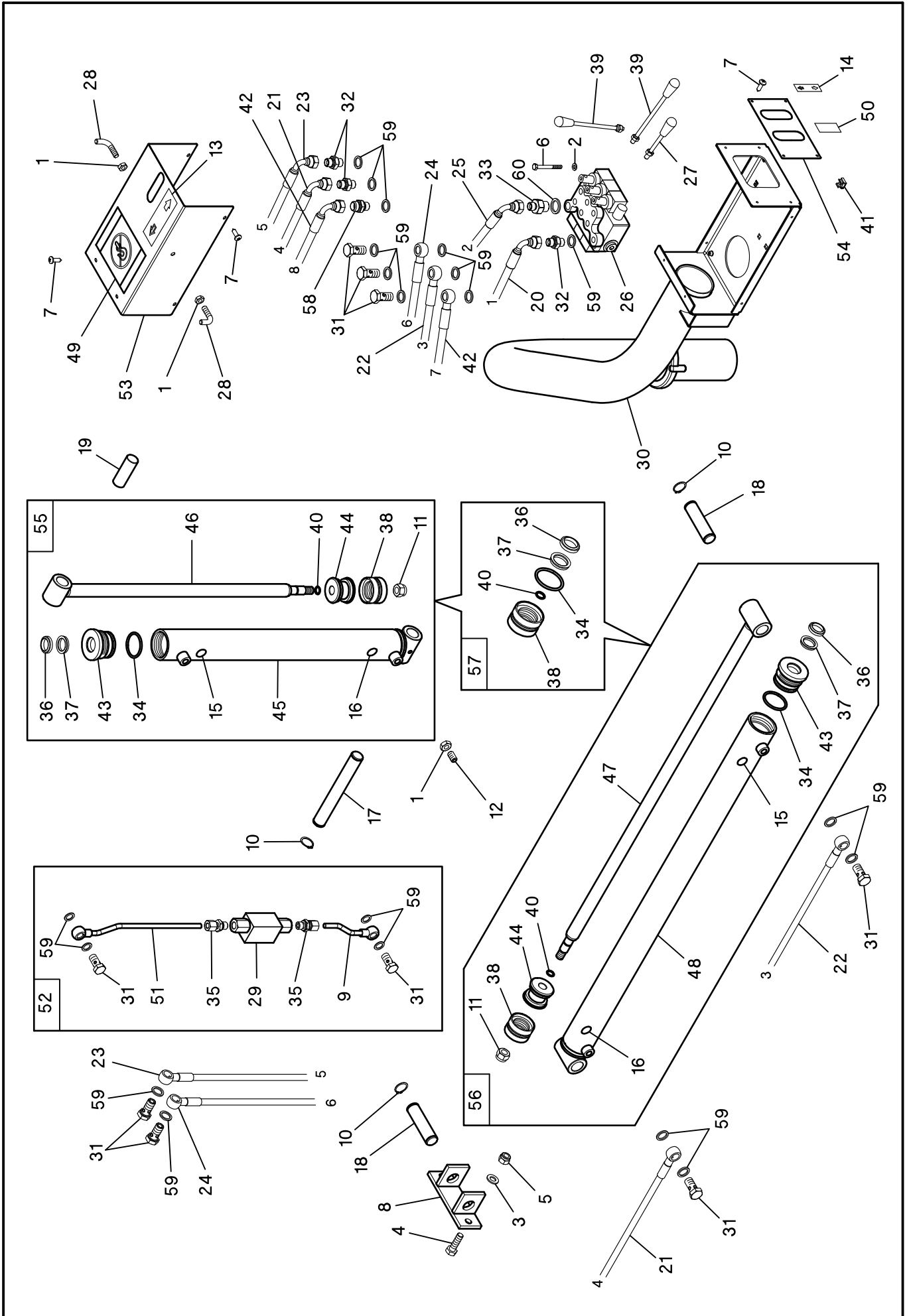
REFER TO NEXT SHEET FOR PARTS DESCRIPTION LISTING

PARTS DESCRIPTION LISTING

Form 11-4-132231, 01-15
Supersedes Form 11-4-132231, 10-14
Sheet 7 of 12

Index No.	Part Number	Description
1	RP11-2-00212	WASHER FOR HEX CAP SCREW M8
2	RP11-2-00213	WASHER FOR HEX CAP SCREW M10
3	RP11-2-00375	HEXAGON HEAD CAP SCREW M8X30
4	RP11-2-00380	HEXAGON HEAD CAP SCREW M10X25
5	RP11-2-00531	SOCKET SET SCREW M6X8
6	RP11-2-00728	SOCKET HEAD CAP SCREW M6X14
7	RP11-2-01037	HEXAGON HEAD CAP SCREW M10X30
8	RP11-2-01968	SOCKET HEAD CAP SCREW M8X85
9	RP11-2-03529	SOCKET HEAD CAP SCREW M8X18
10	RP11-2-03534	HEXAGON HEAD CAP SCREW M6X18
11	RP11-2120013	TYRE PASTE CONTAINER SUPPORT
12	RP11-3015083	HOLDER FOR TYRE PASTE CONTAINER
13	RP11-3016761	HOSE N.1
14	RP11-3016935	HOSE N.2
15	RP11-3-02378	O-RING 6425 (107.2X5.34)
16	RP11-3-90155	UNION M20X1.5
17	RP11-3-90156	PLASTIC RING NUT M20X1.5
18	RP11-3-90193	LOWER PUMP GASKET
19	RP11-3-90194	UPPER PUMP GASKET
20	RP11-3-90199	OIL FILTER COMPLETE
21	RP11-4-132422	HYDRAULIC BOX SUPPORT
22	RP11-4206347	UNION 1/4" BOLT
23	RP11-5-490981	ELECTRIC MOTOR 1PH 230V 60HZ
24	RP11-4216119	O-RING (3.53X15)

Index No.	Part Number	Description
25	RP11-424714	CAP D.10
26	RP11-4-327360	LABEL FOR HYDRAULIC GEARBOX
27	RP11-4-401298	ROTATION MOTOR LABEL
28	RP11-4-404290	OIL DRAIN PLUG WITH O-RING
29	RP11-4-404291	CHECK VALVE
30	RP11-4-404292	VALVE CAP
31	RP11-4-404293	OIL PLUG WITH O-RING
32	RP11-4-404438	OIL FILTER
33	RP11-4-404440	GASKET D.12X22X7
34	RP11-5-120867	PUMP, 4.3CC WITH GASKET
35	RP11-5-490580	MOTOR FLANGE WITH SCREWS
36	RP11-5-490582	FLEXIBLE COUPLING 1.1KW
37	RP11-5-490584	PUMP FLANGE WITH GASKET
38	RP11-5-490587	SET OF PUMP GASKET
39	RP11-5-490588	FIXING KIT
40	RP11-5-490589	OIL TANK WITH FIXING SCREWS
41	RP11-5-490603	COMPLETE PUMP GASKET
42	RP11-86200025	SPECIAL NIPPLE 1/4"
43	RP11-86500153	BONDED SEALS RG1/4
44	RP11-3-10026	TIGHTNESS CABLE HOLDER M20x1,5
45	RP11-3-10027	ADAPTER M25X1,5 - M20X1,5
46	RP11-4-403545	MOTOR LABEL
47	RP11-3-10200	ELECTRIC MOTOR 1PH 230V 60HZ 1.3kW
48	RP11-5-120756	COMPLETE PUMP WITH TANK



TCX625 Tire Changer

REFER TO NEXT SHEET FOR PARTS DESCRIPTION LISTING

PARTS DESCRIPTION LISTING

Index No.	Part Number	Description
1	RP11-2-00156	LOW NUT M8
2	RP11-2-00211	WASHER FOR HEX CAP SCREW M6
3	RP11-2-00214	WASHER FOR HEX CAP SCREW M12
4	RP11-2-00928	HEXAGON HEAD CAP SCREW M12X40
5	RP11-2-01021	NUT WITH POLYAMIDE RING M12
6	RP11-2-01865	HEXAGON HEAD CAP SCREW M6X55
7	RP11-2-02411	SELF-TAPPING SCREW D.4,8X16
8	RP11-2116468	HORIZONTAL CYLINDER FASTENING
9	RP11-2116508	LOWER HOSE
10	RP11-2-71593	SEEGER RING D.24
11	RP11-2-71961	SELF-LOCKING NUT M14X1,5
12	RP11-2-91666	SOCKET SET SCREW M8X14
13	RP11-3006653	CARRIAGE LABEL
14	RP11-3006654	LABEL
15	RP11-3014074	DECAL, A
16	RP11-3014075	DECAL, "B"
17	RP11-3016435	VERTICAL CYLINDER LOWER PIN
18	RP11-3016485	HORIZONTAL CYLINDER PIN
19	RP11-3016486	VERTICAL CYLINDER UPPER PIN
20	RP11-3016761	HOSE N.1
21	RP11-3016762	HOSE N.4
22	RP11-3016763	HOSE N.3
23	RP11-3016765	HOSE N.5
24	RP11-3016766	HOSE N.6
25	RP11-3016935	HOSE N.2
26	RP11-5-121162	DISTRIBUTOR WITH LEVERS
27	RP11-5-121103	COMPLETE DISTRIBUTOR LEVER
28	RP11-336292	HOOK
29	RP11-3-90147	NON-RETURN VALVE
30	RP11-4-132180	CONSOLLE ARM

Index No.	Part Number	Description
31	RP11-4206347	UNION 1/4" BOLT
32	RP11-4206385	NIPPLES 1/4"-1/4"
33	RP11-4207603	NIPPLE 3/8"-1/4"
34	RP11-4207934	O-RING 3,53X42,86
35	RP11-4210089	UNION 1/4"
36	RP11-4210690	DUST COVER
37	RP11-4210691	GASKET FOR SHAFT
38	RP11-4210698	GASKET FOR CYLINDER
39	RP11-4217395	COMPLETE DISTRIBUTOR LEVER
40	RP11-424630	O-RING 2050 (12.42X1.78)
41	RP11-4300320	SQUARE CAGED NUT M6
42	RP11-4-330096	HYDRAULIC HOSE L=3500
43	RP11-4-402870	CYLINDER RING NUT
44	RP11-4-402871	CYLINDER PISTON D. 50
45	RP11-4-402885	CYLINDER CASING D.50X465
46	RP11-4-402886	CYLINDER SHAFT D.50X465
47	RP11-4-402892	CYLINDER SHAFT D. 50X790
48	RP11-4-402897	CYLINDER CASING D. 50X790
49	RP11-4-403143	WARNING LABEL
50	RP11-4-403541	LABEL
51	RP11-4-404798	UPPER HOSE L.255
52	RP11-5-103981	COMPLETE NON-RETURN VALVE
53	RP11-5-120904	CONSOLLE COVER WITH LABELS
54	RP11-5-120905	FRONT COVER WITH LABELS
55	RP11-5-490382	COMPLETE CYLINDER D.50X465
56	RP11-5-490383	COMPLETE CYLINDER D.50X790
57	RP11-5-490611	SET OF GASKET FOR CYLINDER D50
58	RP11-86200137	SPECIAL NIPPLE 1/4" - M14X1.5
59	RP11-86500153	BONDED SEALS RG1/4
60	RP11-86500154	BONDED SEALS RG3/8

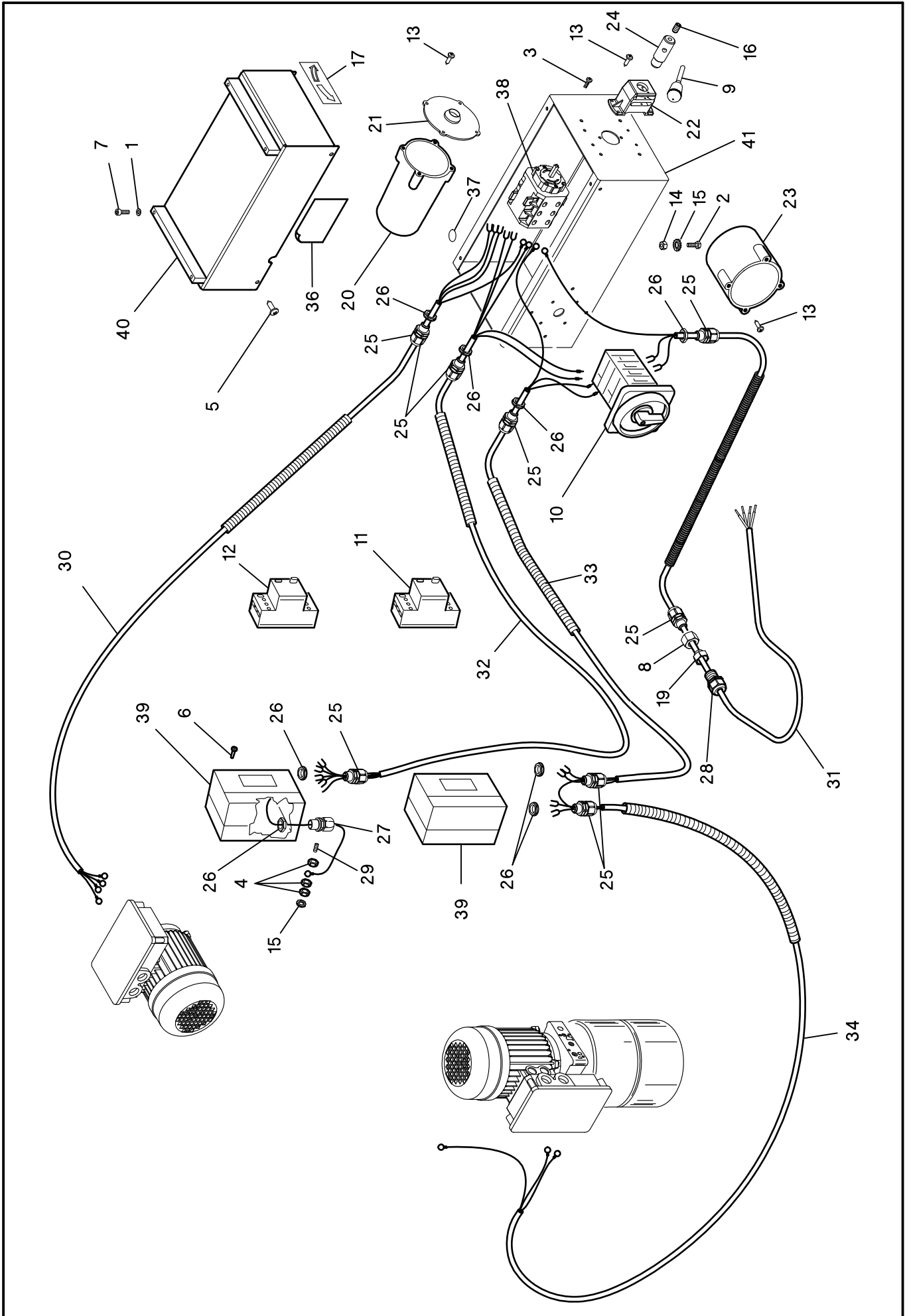
PARTS DESCRIPTION LISTING

Form 11-4-132231, 01-15
Supersedes Form 11-4-132231, 10-14
Sheet 9 of 12

Index No.	Part Number	Description
1	RP11-2-00210	WASHER FOR HEX CAP SCREW M5
2	RP11-2-00349	HEXAGON HEAD CAP SCREW M4X12
3	RP11-2-00579	CROSS PAN HEAD SCREW M3X10
4	RP11-2-00579	HEXAGON HEAD CAP SCREW M4X12
5	RP11-2-02411	SELF-TAPPING SCREW D.4,8X16
6	RP11-2-02440	SLOTTED HEAD SCREW M4X20
7	RP11-2-02807	SOCKET HEAD CAP SCREW M5X16
8	RP11-2-03436	NUT M20X1,5
9	RP11-2201324	COMPLETE REVERSE LEVER
10	RP11-2201326	COMPLETE 1PH. SWITCH
11	RP11-5-121052	SAFETY SWITCH 1PH (PUMP)
12	RP11-2201342	SAFETY SWITCH 1PH (ROTATION)
13	RP11-2-71491	SELF-TAPPING SCREW D.3.5X12.7
14	RP11-2-71506	NUT M4
15	RP11-2-71541	TOOTH WASHER D.4
16	RP11-2-91666	SOCKET SET SCREW M8X14
17	RP11-3006652	LABEL
18	RP11-3-10133	TIGHTNESS CABLE HOLDER M20x1,5
19	RP11-3-10134	NIPLES M25X1.5XM20X1.5
20	RP11-3311195	REVERSING SWITCHES PROTECTION

Index No.	Part Number	Description
21	RP11-3311196	REVERSING SWITCHES GASKET
22	RP11-3316409	REVERSE SUPPORT LEVER
23	RP11-3316490	SWITCH PROTECTION
24	RP11-3316929	REVERSE LEVER HUB
25	RP11-3-90155	UNION M20X1.5
26	RP11-3-90156	PLASTIC RING NUT M20X1.5
27	RP11-3-90157	TIGHTNESS CABLE HOLDER M20X1.5
28	RP11-3-90158	CABLE HOLDER M20X1.5
29	RP11-5-120293	ELECTRIC BOX
30	RP11-4-132188	CABLE (FROM REVERSE TO MOTOR)
31	RP11-4-132189	FEEDING CABLE
32	RP11-4-132190	CABLE (FROM SAFETY SWITCH TO REVERSE)
33	RP11-4-132192	CABLE (FROM MAIN SWITCH TO PUMP SAFETY)
34	RP11-4-132193	CABLE (FROM SAFETY SWITCH TO PUMP)
35	RP11-5-120292	CONSOLLE COVER
36	RP11-4-132458	WARNING LABEL
37	RP11-4207270	EARTH LABEL
38	RP11-4216444	1PH REVERSE
39	RP11-4216451	BOX

CSA Version



TCX625 Tire Changer

REFER TO NEXT SHEET FOR PARTS DESCRIPTION LISTING

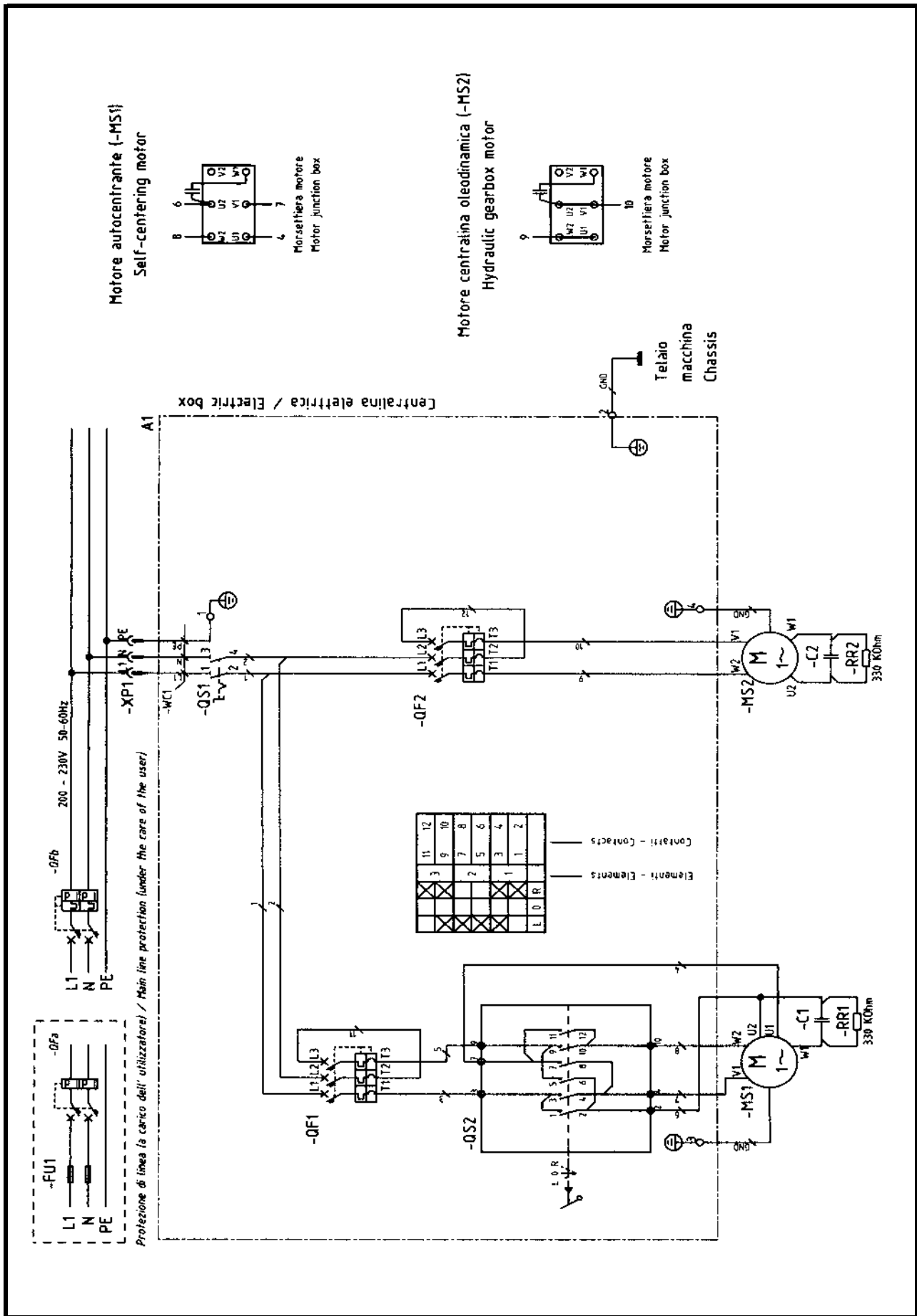
PARTS DESCRIPTION LISTING

Form 11-4-132231, 01-15
Supersedes Form 11-4-132231, 10-14
Sheet 10 of 12

Index No.	Part Number	Description
1	RP11-2-00210	WASHER FOR HEX CAP SCREW M5
2	RP11-2-00349	HEXAGON HEAD CAP SCREW M4X12
3	RP11-2-00579	CROSS PAN HEAD SCREW M3X10
4	RP11-2-01256	NUT M4
5	RP11-2-02411	SELF-TAPPING SCREW D.4,8X16
6	RP11-2-02440	SLOTTED HEAD SCREW M4X20
7	RP11-2-02807	SOCKET HEAD CAP SCREW M5X16
8	RP11-2-03436	NUT M20X1,5
9	RP11-2201324	COMPLETE REVERSE LEVER
10	RP11-2201326	COMPLETE 1PH. SWITCH
11	RP11-5-121052	SAFETY SWITCH 1PH (PUMP)
12	RP11-2201342	SAFETY SWITCH 1PH (ROTATION)
13	RP11-2-71491	SELF-TAPPING SCREW D.3.5X12.7
14	RP11-2-71506	NUT M4
15	RP11-2-71541	TOOTH WASHER D.4
16	RP11-2-91666	SOCKET SET SCREW M8X14
17	RP11-3006652	LABEL
19	RP11-3-10134	NIPLES M25X1.5XM20X1.5
20	RP11-3311195	REVERSING SWITCHES PROTECTION
21	RP11-3311196	REVERSING SWITCHES GASKET

Index No.	Part Number	Description
22	RP11-3316409	REVERSE SUPPORT LEVER
23	RP11-3316490	SWITCH PROTECTION
24	RP11-3316929	REVERSE LEVER HUB
25	RP11-3-90155	UNION M20X1.5
26	RP11-3-90156	PLASTIC RING NUT M20X1.5
27	RP11-3-90157	TIGHTNESS CABLE HOLDER M20X1.5
28	RP11-3-90158	CABLE HOLDER M20X1.5
29	RP11-4-130505	SPECIAL SCREW M4X25
30	RP11-4-133004	CABLE (FROM REVERSE TO MOTOR)
31	RP11-4-130379	FEEDING CABLE
32	RP11-4-133003	CABLE (FROM SAFETY SWITCH TO REVERSE)
33	RP11-4-133008	CABLE (FROM MAIN SWITCH TO PUMP SAFETY)
34	RP11-4-130355	CABLE (FROM SAFETY SWITCH TO PUMP)
36	RP11-4-132458	WARNING LABEL
37	RP11-4207270	EARTH LABEL
38	RP11-4216444	1PH REVERSE
39	RP11-4216451	BOX
40	RP11-5-120292	CONSOLLE COVER
41	RP11-5-120293	ELECTRIC BOX

1PH WIRE DIAGRAM



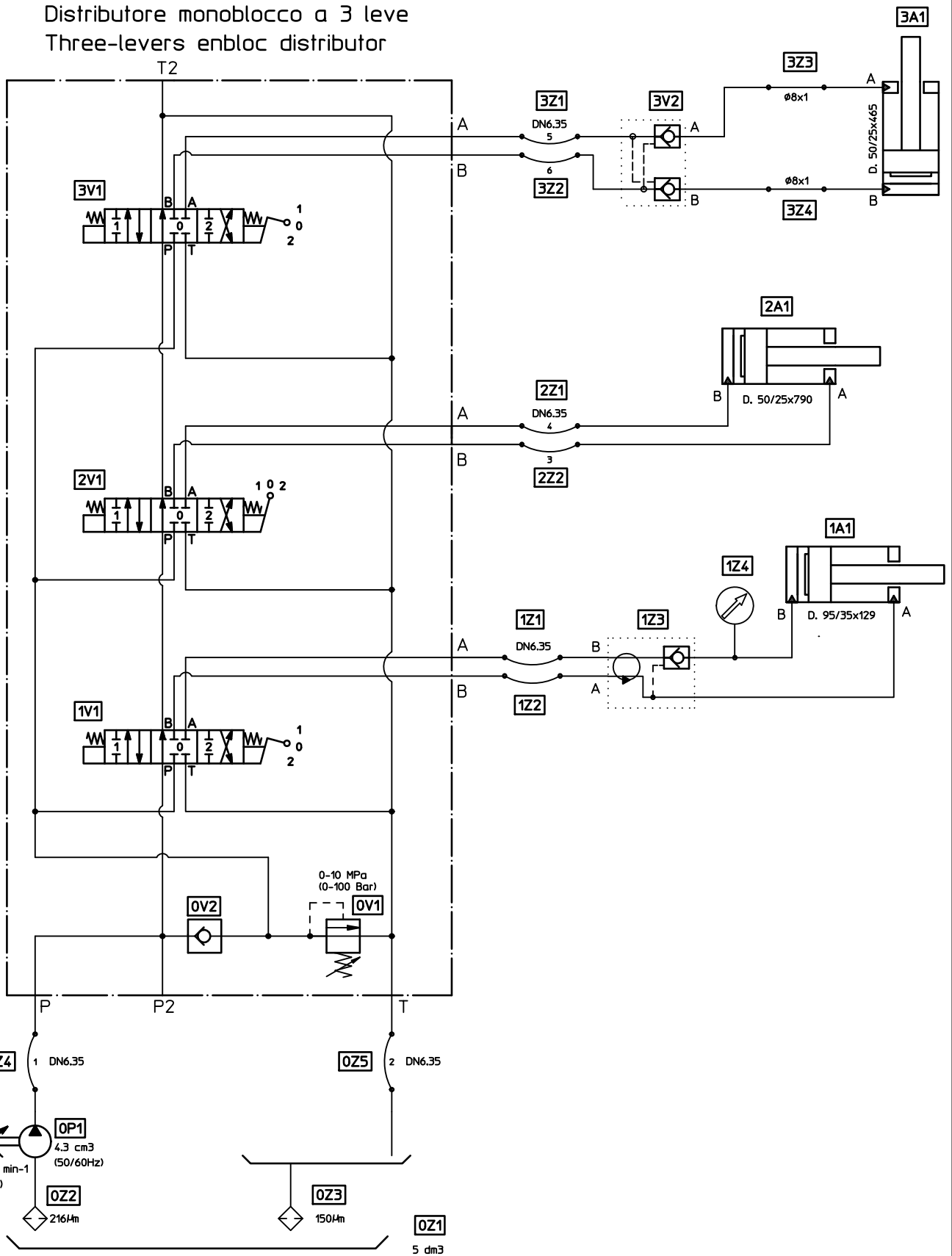
TCX625 Tire Changer

REFER TO NEXT SHEET FOR PARTS DESCRIPTION LISTING

Index No.	Description
C1	Condenser
C2	Condenser
MS1	Self-centering chuck motor
MS2	Hydraulic gearbox motor
QF1	Motor protection switch
QF2	Motor protection switch

HYDRAULIC DIAGRAM

Distributore monoblocco a 3 leve
Three-levers enbloc distributor



TCX625 Tire Changer

REFER TO NEXT SHEET FOR PARTS DESCRIPTION LISTING

PARTS DESCRIPTION LISTING Supersedes Form 11-4-132231,10-14

Index No.	Description
0A1	Hydraulic gearbox motor
0P1	Pump with gears
0V1	Pressure limit valve
0V2	Unidirectional valve
0Z1	Oil tank
0Z2	Suction filter
0Z3	Discharge filter
0Z4-0Z5	Hose
1A1	Self-centering chuck cylinder
1V1	Cylinder control valve
1Z1-1Z2	Hose
1Z3	Rotating union assembly
1Z4	Pressure gauge
2A1	Horizontal carriage cylinder
2V1	Cylinder control valve
2Z1-2Z2	Hose
3A1	Vertical carriage cylinder
3V1	Cylinder control valve
3V2	Non-return valve
3Z1-3Z2	Hose